

Datasheet for ABIN375435  
**anti-LY-49I (LY-49I) antibody (Biotin)**[Go to Product page](#)

## 1 Image

## Overview

Quantity:	0.5 mg
Target:	LY-49I
Reactivity:	Mouse
Host:	Mouse
Clonality:	Monoclonal
Conjugate:	Biotin
Application:	Flow Cytometry (FACS)

## Product Details

Immunogen:	CHO-K1 cells transfected with B6 allele of Ly49I gene
Clone:	YLI-90
Isotype:	IgG1
Specificity:	Mouse Ly-49I
Characteristics:	Mouse Anti-Mouse Ly-49I-BIOT
Purification:	Purified

## Target Details

Target:	LY-49I
Alternative Name:	Ly-49I ( <a href="#">LY-49I Products</a> )

## Application Details

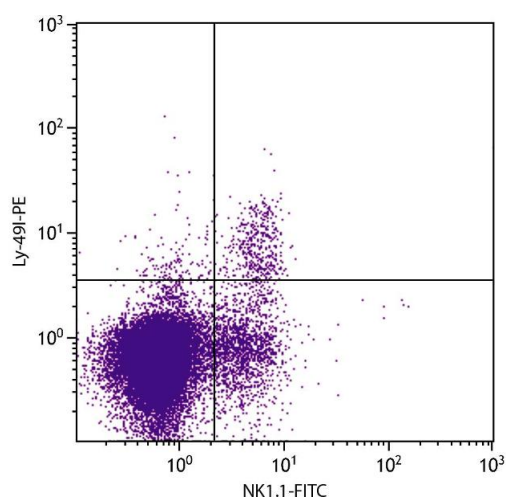
Application Notes:	<ul style="list-style-type: none"><li>• <b>Applications:</b> FC - Quality tested</li><li>• <b>Working Dilutions:</b> Flow Cytometry Purified (UNLB) antibody 1 g/106 cells FITC and BIOT conjugates 1 g/106 cells PE conjugate 0.2 g/106 cells For flow cytometry, the suggested use of these reagents is in a final volume of 100 L</li></ul>
--------------------	--

Sample Volume:	1 mL
Restrictions:	For Research Use only

## Handling

Concentration:	0.5 mg/mL
Buffer:	0.5 mg in 1.0 mL of PBS/Sodium azide
Preservative:	Sodium azide
Precaution of Use:	This product contains Sodium azide: a POISONOUS AND HAZARDOUS SUBSTANCE which should be handled by trained staff only.
Handling Advice:	<b>Protect conjugated products from light.</b> Each reagent is stable for the period shown on the bottle label if stored as directed.
Storage:	4 °C
Storage Comment:	Store at 2-8°C

## Images



### Flow Cytometry

**Image 1.** C57BL/6 mouse splenocytes were stained with Mouse Anti-Mouse Ly-49I-PE.