

Datasheet for ABIN375464

anti-LY-49I (LY-49I) antibody (FITC)[Go to Product page](#)**1** Image

Overview

Quantity:	0.5 mg
Target:	LY-49I
Reactivity:	Mouse
Host:	Mouse
Clonality:	Monoclonal
Conjugate:	FITC
Application:	Flow Cytometry (FACS)

Product Details

Immunogen:	CHO-K1 cells transfected with B6 allele of Ly49I gene
Clone:	YLI-90
Isotype:	IgG1
Specificity:	Mouse Ly-49I
Characteristics:	Mouse Anti-Mouse Ly-49I-FITC
Purification:	Purified

Target Details

Target:	LY-49I
Alternative Name:	Ly-49I (LY-49I Products)

Application Details

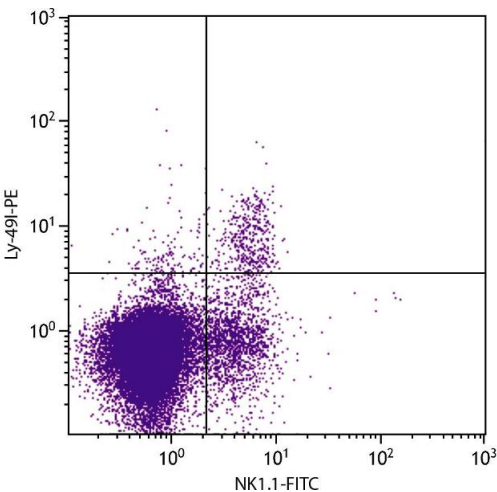
Application Notes:	<ul style="list-style-type: none">• Applications: FC - Quality tested• Working Dilutions: Flow Cytometry Purified (UNLB) antibody 1 g/106 cells FITC and BIOT conjugates 1 g/106 cells PE conjugate 0.2 g/106 cells For flow cytometry, the suggested use of these reagents is in a final volume of 100 L
--------------------	--

Sample Volume:	1 mL
Restrictions:	For Research Use only

Handling

Concentration:	0.5 mg/mL
Buffer:	0.5 mg in 1.0 mL of PBS/Sodium azide
Preservative:	Sodium azide
Precaution of Use:	This product contains Sodium azide: a POISONOUS AND HAZARDOUS SUBSTANCE which should be handled by trained staff only.
Handling Advice:	Protect conjugated products from light. Each reagent is stable for the period shown on the bottle label if stored as directed.
Storage:	4 °C
Storage Comment:	Store at 2-8°C

Images



Flow Cytometry

Image 1. C57BL/6 mouse splenocytes were stained with Mouse Anti-Mouse Ly-49I-PE.