



Datasheet for ABIN375533  
**anti-LY-49I (LY-49I) antibody (PE)**



[Go to Product page](#)

1 Image

### Overview

Quantity:	0.1 mg
Target:	LY-49I
Reactivity:	Mouse
Host:	Mouse
Clonality:	Monoclonal
Conjugate:	PE
Application:	Flow Cytometry (FACS)

### Product Details

Immunogen:	CHO-K1 cells transfected with B6 allele of Ly49I gene
Clone:	YLI-90
Isotype:	IgG1
Specificity:	Mouse Ly-49I
Characteristics:	Mouse Anti-Mouse Ly-49I-PE
Purification:	Purified

### Target Details

Target:	LY-49I
Alternative Name:	Ly-49I ( <a href="#">LY-49I Products</a> )

## Application Details

Application Notes:	<ul style="list-style-type: none"><li>• <b>Applications:</b> FC - Quality tested</li><li>• <b>Working Dilutions:</b> Flow Cytometry Purified (UNLB) antibody 1 g/106 cells FITC and BIOT conjugates 1 g/106 cells PE conjugate 0.2 g/106 cells For flow cytometry, the suggested use of these reagents is in a final volume of 100 L</li></ul>
--------------------	------------------------------------------------------------------------------------------------------------------------------------------------------------------------------------------------------------------------------------------------------------------------------------------------------------------------------------------------

Sample Volume: 1 mL

Restrictions: For Research Use only

## Handling

Concentration: 0.1 mg/mL

Buffer: 0.1 mg in 1.0 mL of PBS/Sodium azide and a stabilizing agent

Preservative: Sodium azide

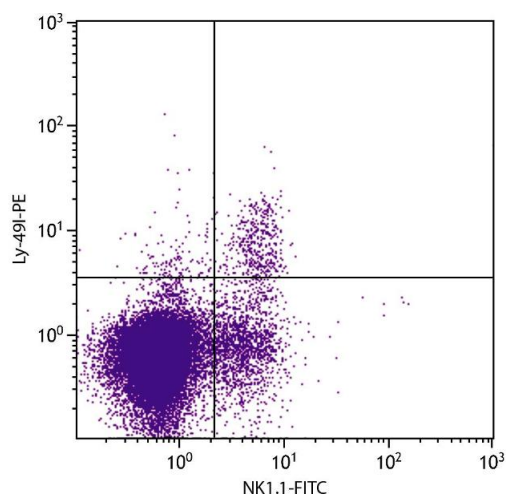
Precaution of Use: This product contains Sodium azide: a POISONOUS AND HAZARDOUS SUBSTANCE which should be handled by trained staff only.

Handling Advice: **Do not freeze!**  
**Protect conjugated products from light.**  
Each reagent is stable for the period shown on the bottle label if stored as directed.

Storage: 4 °C

Storage Comment: Store at 2-8°C

## Images



### Flow Cytometry

**Image 1.** C57BL/6 mouse splenocytes were stained with Mouse Anti-Mouse Ly-49I-PE.