

Datasheet for ABIN375579

anti-Sca-1/Ly-6A/E antibody (SPRD)[Go to Product page](#)**1** Image

Overview

Quantity:	0.1 mg
Target:	Sca-1/Ly-6A/E (Ly6a)
Reactivity:	Mouse
Host:	Rat
Clonality:	Monoclonal
Conjugate:	This Sca-1/Ly-6A/E antibody is conjugated to SPRD
Application:	Flow Cytometry (FACS)

Product Details

Brand:	Spectral Red [™]
Immunogen:	IL-2 dependent mouse (C57BL/6) cytotoxic T cell line CTL-L
Clone:	D7
Isotype:	IgG2a
Specificity:	Mouse Ly-6A/E (Ly-6A.2 & Ly-6E.1), Mr 18 kDa
Characteristics:	Rat Anti-Mouse Ly-6A/E-SPRD
Purification:	Purified

Target Details

Target:	Sca-1/Ly-6A/E (Ly6a)
Alternative Name:	Ly-6A/E (Ly6a Products)

Target Details

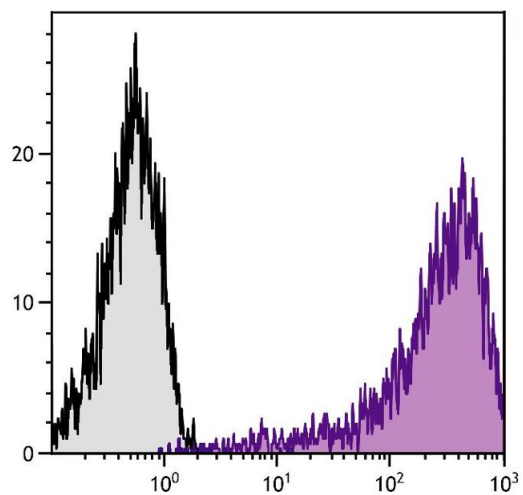
Background:	Ly-6A/E, also known as Sca-1, is a member of the Ly-6 multigene family of type V glycoposphatidylinositol-anchored cell surface proteins. It is expressed on multipotent hematopoietic stem cells in bone marrow of mice with both the Ly-6.1 and Ly-6.2 allotypes. In the periphery, Ly-6A/E exhibits a pattern of expression which is based on differences between the two allotypes. Ly-6.1 strains (e.g., A, BALB/c, CBA, C3H/He, DBA/1, NZB) have few Ly-6A/E + resting peripheral lymphocytes, whereas Ly-6.2 strains (e.g., AKR, C57BL, C57BR, C57L, DBA/2, PL, SJL, SWR, 129) have relatively high numbers of Ly-6A/E + lymphocytes. The expression of Ly-6A/E is dramatically upregulated in all strains upon cellular activation.
Pathways:	Sensory Perception of Sound , Activated T Cell Proliferation

Application Details

Application Notes:	<ul style="list-style-type: none">• Applications: FC - Quality tested , IHC-FS - Reported in literature , IHC-PS - Reported in literature , IP - Reported in literature , WB - Reported in literature , Costim - Reported in literature• Working Dilutions: Flow Cytometry FITC, BIOT, and AF488 conjugates 1 g/106 cells PE, APC, SPRD, PE/CY5.5, PACBLU, and AF647 conjugates 0.2 g/106 cells For flow cytometry, the suggested use of these reagents is in a final volume of 100 L
Comment:	In vitro lymphocyte activation
Sample Volume:	1 mL
Restrictions:	For Research Use only

Handling

Concentration:	0.1 mg/mL
Buffer:	0.1 mg in 1.0 mL of PBS/Sodium azide and a stabilizing agent
Preservative:	Sodium azide
Precaution of Use:	This product contains Sodium azide: a POISONOUS AND HAZARDOUS SUBSTANCE which should be handled by trained staff only.
Handling Advice:	Do not freeze! Protect conjugated products from light. Each reagent is stable for the period shown on the bottle label if stored as directed.
Storage:	4 °C
Storage Comment:	Store at 2-8°C



Flow Cytometry

Image 1. Con-A stimulated BALB/c mouse splenocytes were stained with Rat Anti-Mouse Ly-6A/E-SPRD.