

Datasheet for ABIN375696

Mouse anti-Rat Ig (Chain kappa) Antibody (Alkaline Phosphatase (AP))



[Go to Product page](#)

1 Image

Overview

Quantity:	1 mL
Target:	Ig
Binding Specificity:	Chain kappa
Reactivity:	Rat
Host:	Mouse
Clonality:	Monoclonal
Conjugate:	Alkaline Phosphatase (AP)
Application:	ELISA

Product Details

Clone:	K 4F5
Isotype:	IgG1
Characteristics:	To insure lot-to-lot consistency, each batch of monoclonal antibody is tested as a second step reagent by flow cytometry to conform to characteristics of a standard reference reagent.
Purification:	Purified

Target Details

Target:	Ig
Alternative Name:	Immunoglobulin Ig (Ig Products)

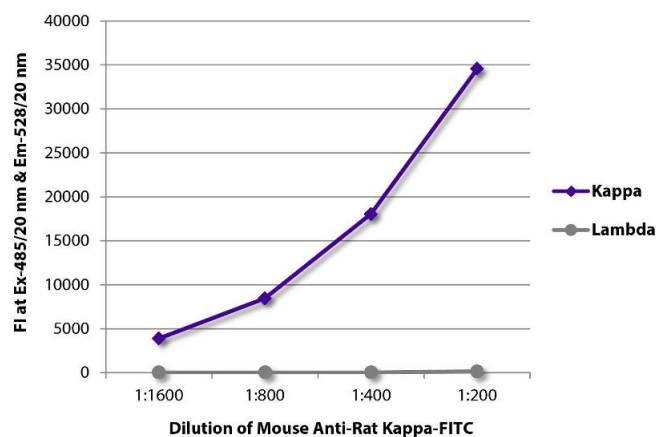
Application Details

Application Notes:	Working Dilution: ≤ 002 µg/10 ⁶ cells Representative data are included in this product insert. Each laboratory should determine an optimum working titer for use in its particular application. Other applications have not been tested but use in such assays should not necessarily be excluded.
Sample Volume:	1 mL
Restrictions:	For Research Use only

Handling

Format:	Liquid
Handling Advice:	Protect conjugated products from light. Each reagent is stable for the period shown on the bottle label if stored as directed.
Storage:	4 °C

Images



ELISA

Image 1. FLISA plate was coated with purified rat IgG1κ, IgG2aλ, IgG2aλ, IgG2bκ, IgG2bλ, IgG2cκ, IgMκ, and IgMλ. Immunoglobulins were detected with serially diluted Mouse Anti-Rat Kappa-FITC.