

Datasheet for ABIN375702

Mouse anti-Rabbit IgG (Heavy Chain) Antibody (Alkaline Phosphatase (AP))[Go to Product page](#)**1** Image

Overview

Quantity:	1 mL
Target:	IgG
Binding Specificity:	Heavy Chain
Reactivity:	Rabbit
Host:	Mouse
Clonality:	Monoclonal
Conjugate:	Alkaline Phosphatase (AP)
Application:	ELISA

Product Details

Clone:	2A9
Isotype:	IgG1
Specificity:	Reacts with the heavy chain of all subclasses of rabbit IgG as demonstrated by ELISA.
Characteristics:	To insure lot-to-lot consistency, each batch of product is tested by ELISA and/or flow cytometry to conform to characteristics of a standard reference reagent.
Purification:	Purified

Target Details

Target:	IgG
Abstract:	IgG Products

Target Details

Target Type: Antibody

Application Details

Application Notes: Each laboratory should determine an optimum working titer for use in its particular application. Other applications have not been tested but use in such assays should not necessarily be excluded.

Restrictions: For Research Use only

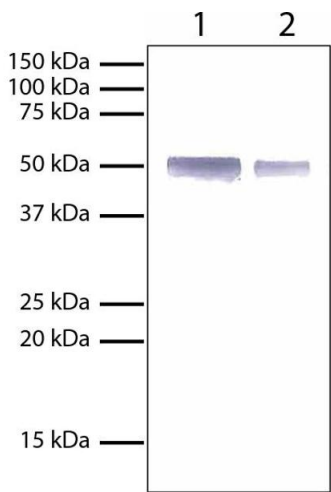
Handling

Format: Liquid

Handling Advice: **Do not freeze!** Freezing alkaline phosphatase conjugates will result in a substantial loss of enzymatic activity.
Do not add Sodium azide.
Dilute only prior to immediate use
Each reagent is stable for the period shown on the bottle label if stored as directed.

Storage: 4 °C

Images



Western Blotting

Image 1. Lane 1 - 1 mg Rabbit IgG

Lane 2 - 0.5 mg Rabbit IgG

Rabbit IgG.