

Datasheet for ABIN375712

**Goat anti-Pig IgG (Heavy & Light Chain) Antibody (Alkaline Phosphatase (AP))**[Go to Product page](#)**1** Image

## Overview

Quantity:	1 mL
Target:	IgG
Binding Specificity:	Heavy & Light Chain
Reactivity:	Pig
Host:	Goat
Clonality:	Polyclonal
Conjugate:	Alkaline Phosphatase (AP)
Application:	ELISA, Immunohistochemistry (IHC), Western Blotting (WB)

## Product Details

Isotype:	IgG
Specificity:	Reacts with the heavy and light chains of porcine IgG as demonstrated by ELISA.
Characteristics:	Source: Pooled antisera from goats hyperimmunized with porcine IgG. To insure lot-to-lot consistency, each batch of product is tested by ELISA and PCFIA for conformance to characteristics of a standard reference reagent.
Purification:	Affinity chromatography on bovine IgG covalently linked to agarose.

## Target Details

Target:	IgG
Abstract:	<a href="#">IgG Products</a>

## Target Details

Target Type: Antibody

## Application Details

Application Notes: Working Dilution:  
1:2,000-1:4,000  
Representative data are included in this product insert.

Each laboratory should determine an optimum working titer for use in its particular application. Other applications have not been tested but use in such assays should not necessarily be excluded.

Restrictions: For Research Use only

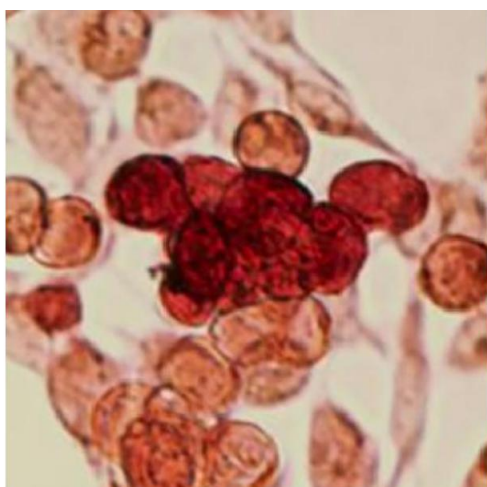
## Handling

Format: Liquid

Handling Advice: **Do not freeze!** Freezing alkaline phosphatase conjugates will result in a substantial loss of enzymatic activity.  
**Do not add Sodium azide.**  
Dilute only prior to immediate use  
Each reagent is stable for the period shown on the bottle label if stored as directed.

Storage: 4 °C

## Images



**Image 1.** HEK-293A cells infected with B438L recombinant adenovirus were stained with gamma-irradiated African swine fever virus-specific convalescent serum followed by Goat Anti-Porcine IgG(H+L)-FITC