

Datasheet for ABIN375737

## Donkey anti-Goat IgG (Heavy & Light Chain) Antibody (Alkaline Phosphatase (AP))



[Go to Product page](#)

### 1 Image

#### Overview

Quantity:	1 mL
Target:	IgG
Binding Specificity:	Heavy & Light Chain
Reactivity:	Goat
Host:	Donkey
Clonality:	Polyclonal
Conjugate:	Alkaline Phosphatase (AP)
Application:	ELISA, Immunohistochemistry (IHC), Western Blotting (WB)

#### Product Details

Isotype:	IgG
Specificity:	Reacts with the heavy and light chains of Goat IgG as demonstrated by ELISA.
Characteristics:	Source: Pooled antisera from donkey hyperimmunized with goat IgG. To insure lot-to-lot consistency, each batch of product is tested by ELISA and/or PCFIA for conformance to characteristics of a standard reference reagent.
Purification:	Affinity chromatography on goat IgG covalently linked to agarose.

#### Target Details

Target:	IgG
Abstract:	<a href="#">IgG Products</a>

## Target Details

---

Target Type: Antibody

## Application Details

---

Application Notes: Working Dilution:  
1:2,000-1:4,000  
Representative data are included in this product insert.

Each laboratory should determine an optimum working titer for use in its particular application. Other applications have not been tested but use in such assays should not necessarily be excluded.

Restrictions: For Research Use only

## Handling

---

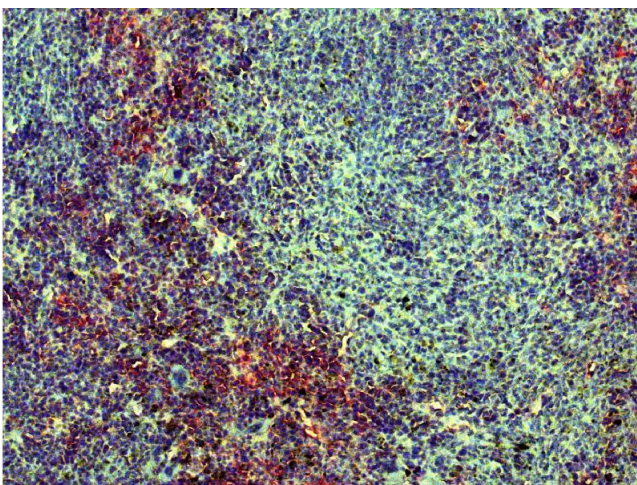
Format: Liquid

Handling Advice: **Do not freeze!** Freezing alkaline phosphatase conjugates will result in a substantial loss of enzymatic activity.  
**Do not add Sodium azide.**  
Dilute only prior to immediate use  
Each reagent is stable for the period shown on the bottle label if stored as directed.

Storage: 4 °C

## Images

---



### Immunohistochemistry

**Image 1.** Paraffin embedded mouse spleen section was stained with Goat F(ab')<sub>2</sub> Anti-Mouse Kappa-UNLB, Red AP, and hematoxylin.