

Datasheet for ABIN375738

Donkey anti-Rat IgG (Heavy & Light Chain) Antibody (Alkaline Phosphatase (AP))

[Go to Product page](#)

1 Image

Overview

Quantity:	1 mL
Target:	IgG
Binding Specificity:	Heavy & Light Chain
Reactivity:	Rat
Host:	Donkey
Clonality:	Polyclonal
Conjugate:	Alkaline Phosphatase (AP)
Application:	ELISA, Immunohistochemistry (IHC), Western Blotting (WB)

Product Details

Isotype:	IgG
Specificity:	Reacts with the heavy and light chains of Rat IgG as demonstrated by ELISA.
Characteristics:	Source: Pooled antisera from donkey hyperimmunized with rat IgG. To insure lot-to-lot consistency, each batch of product is tested by ELISA and/or PCFIA for conformance to characteristics of a standard reference reagent.
Purification:	Affinity chromatography on mouse IgG covalently linked to agarose.

Target Details

Target:	IgG
Abstract:	IgG Products

Target Details

Target Type: Antibody

Application Details

Application Notes: Working Dilution:
1:2,000-1:4,000
Representative data are included in this product insert.

Each laboratory should determine an optimum working titer for use in its particular application. Other applications have not been tested but use in such assays should not necessarily be excluded.

Restrictions: For Research Use only

Handling

Format: Liquid

Handling Advice: **Do not freeze!** Freezing alkaline phosphatase conjugates will result in a substantial loss of enzymatic activity.
Do not add Sodium azide.
Dilute only prior to immediate use
Each reagent is stable for the period shown on the bottle label if stored as directed.

Storage: 4 °C

Images

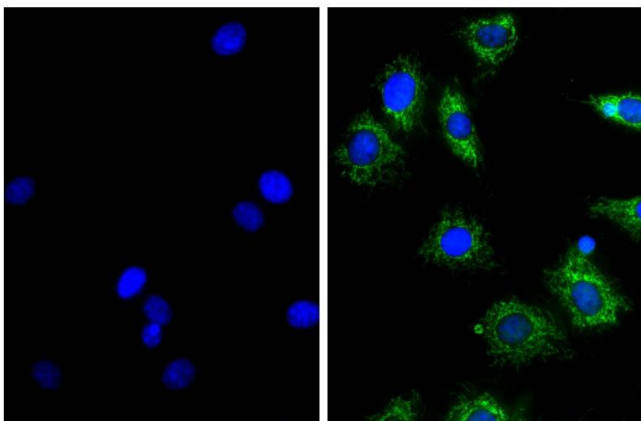


Image 1. NIH/Swiss mouse fibroblast cell line 3T3 was stained with Rat Anti- β -Actin-UNLB (right) followed by Donkey Anti-Rat IgG(H+L), Mouse SP ads-AF488 and DAPI.