

Datasheet for ABIN375806
anti-CD45 antibody (APC)



[Go to Product page](#)

1 Image

1 Publication

Overview

Quantity:	0.1 mg
Target:	CD45 (PTPRC)
Reactivity:	Chicken
Host:	Mouse
Clonality:	Monoclonal
Conjugate:	This CD45 antibody is conjugated to APC
Application:	Flow Cytometry (FACS)

Product Details

Immunogen:	Chicken bursal lymphocytes
Clone:	LT40
Isotype:	IgM
Specificity:	Chicken CD45, Mr 190-215 kDa
Characteristics:	Mouse Anti-Chicken CD45-APC
Purification:	Purified

Target Details

Target:	CD45 (PTPRC)
Alternative Name:	CD45 (PTPRC Products)
Background:	Chicken CD45 is a transmembrane glycoprotein expressed on all leukocytes. B lineage cells in

Target Details

the bursa of Fabricius express the 215 kDa isoform while T lineage cells bear the 190 kDa variant. These high molecular weight molecules have intrinsic phosphotyrosine phosphatase activity characteristic of mammalian CD45. 1 Levels of CD45 expression detected by MAb LT40 in the avian thymus are heterogeneous with approximately 90 % of thymocytes expressing fourfold higher levels of surface CD45 (CD45 hi) than do the remaining 10 % (CD45 lo) of thymocytes. The CD45 lo population contains exclusively thymocytes with the CD3 - CD4 - CD8 lo phenotype characteristic of the immediate precursors to the CD3 - CD4 + CD8 + thymic population which are CD45 hi. This shift from low to high levels of surface CD45 expression is concomitant with the transition from CD4 - CD8 lo to CD4 + CD8 + and before the expression of CD3.

Pathways: [TCR Signaling](#), [Regulation of Leukocyte Mediated Immunity](#), [Positive Regulation of Immune Effector Process](#), [Production of Molecular Mediator of Immune Response](#), [CXCR4-mediated Signaling Events](#), [BCR Signaling](#)

Application Details

Application Notes:

- **Applications:** FC - Quality tested , IHC-FS - Reported in literature , IHC-PS - Reported in literature , IHC-WM - Reported in literature , ICC - Reported in literature , IP - Reported in literature , Sep - Reported in literature
- **Working Dilutions:** Flow Cytometry FITC, BIOT, and AF488 conjugates 1 g/10⁶ cells PE, APC, and SPRD conjugates 0.2 g/10⁶ cells For flow cytometry, the suggested use of these reagents is in a final volume of 100 L

Sample Volume: 1 mL

Restrictions: For Research Use only

Handling

Concentration: 0.1 mg/mL

Buffer: 0.1 mg in 1.0 mL of PBS/Sodium azide and a stabilizing agent

Preservative: Sodium azide

Precaution of Use: This product contains Sodium azide: a POISONOUS AND HAZARDOUS SUBSTANCE which should be handled by trained staff only.

Handling Advice: **Do not freeze!**
Protect conjugated products from light.
Each reagent is stable for the period shown on the bottle label if stored as directed.

Handling

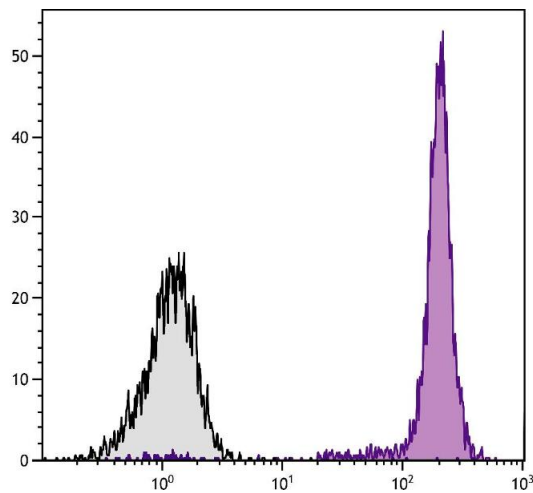
Storage: 4 °C

Storage Comment: Store at 2-8°C

Publications

Product cited in: Matulova, Stepanova, Sisak, Havlickova, Faldynova, Kyrova, Volf, Rychlik: "Cytokine signaling in splenic leukocytes from vaccinated and non-vaccinated chickens after intravenous infection with salmonella enteritidis." in: **PLoS ONE**, Vol. 7, Issue 2, pp. e32346, (2012) ([PubMed](#)).

Images



Flow Cytometry

Image 1. Chicken peripheral blood lymphocytes were stained with Mouse Anti-Chicken CD45-APC.