

Datasheet for ABIN375904

Goat anti-Mouse Ig (Heavy & Light Chain) Antibody (Biotin)[Go to Product page](#)**1** Image

Overview

Quantity:	1 mg
Target:	Ig
Binding Specificity:	Heavy & Light Chain
Reactivity:	Mouse
Host:	Goat
Clonality:	Polyclonal
Conjugate:	Biotin
Application:	ELISA, Flow Cytometry (FACS), Immunohistochemistry (IHC), Western Blotting (WB)

Product Details

Isotype:	IgG
Specificity:	Reacts with the heavy and light chains of mouse IgM, IgG 1, IgG 2a, IgG 2b, IgG 3 and IgA as demonstrated by ELISA and flow cytometry.
Characteristics:	Source: Pooled antisera from goats hyperimmunized with mouse IgM, IgG and IgA paraproteins. To insure lot-to-lot consistency, each batch of product is tested by ELISA, PCFIA and/or flow cytometry to conform to characteristics of a standard reference reagent.
Purification:	Affinity chromatography on pooled mouse IgM+IgG+IgA covalently linked to agarose.

Target Details

Target:	Ig
---------	----

Target Details

Abstract: [Ig Products](#)

Application Details

Application Notes: Working Dilution:
<= 1 µg/10⁶ cells or 1:5,000-1:20,000
Representative data are included in this product insert.

Each laboratory should determine an optimum working titer for use in its particular application. Other applications have not been tested but use in such assays should not necessarily be excluded.

Restrictions: For Research Use only

Handling

Handling Advice: Avoid cycles of freezing and thawing.

Storage: 4 °C

Images

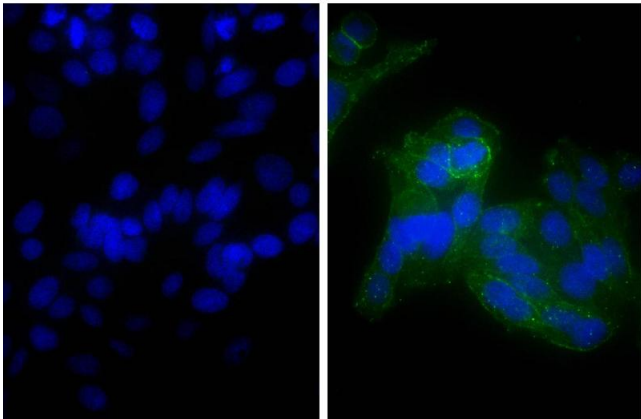


Image 1. Human epithelial carcinoma cell line HEp-2 was stained with Mouse Anti-Human CD44-UNLB, and DAPI.