

Datasheet for ABIN375905

Goat anti-Mouse Ig Antibody (Biotin) - Preadsorbed[Go to Product page](#)**1** Image

Overview

Quantity:	0.5 mg
Target:	Ig
Reactivity:	Mouse
Host:	Goat
Clonality:	Polyclonal
Conjugate:	Biotin
Application:	ELISA, Flow Cytometry (FACS)

Product Details

Isotype:	IgG
Fragment:	F(ab') ₂ fragment
Specificity:	Reacts with the heavy and light chains of mouse IgG1, IgG2a, IgG2b, IgG2c, IgG3, IgM, and IgA
Characteristics:	Goat F(ab') ₂ Anti-Mouse Ig, Human ads-BIOT
Purification:	Preadsorption: Human adsorbed

Target Details

Target:	Ig
Abstract:	Ig Products

Application Details

Application Notes:

- **Applications:** Quality tested applications include - ELISA , FLISA FC ,
- Other referenced applications include - ELISPOT , ICC , WB , Stim
- **Working Dilutions:** ELISA AP conjugate 1:2,000 - 1:4,000 HRP conjugate 1:4,000 - 1:8,000 BIOT conjugate 1:5,000 - 1:20,000 FLISA FITC, AF488, and AF555 conjugates 1:100 - 1:400 PE, APC, CY5, and AF647 conjugates 1 g/mL Flow Cytometry FITC, BIOT, and AF488 conjugates 1 g/10⁶ cells PE, APC, SPRD, CY5, PE/CY5.5, and AF647 conjugates 0.1 g/10⁶ cells PE/TXRD 0.03 g/10⁶ cells For flow cytometry, the suggested use of these reagents is in a final volume of 100 L

Restrictions:

For Research Use only

Handling

Concentration:

0.5 mg/mL

Buffer:

0.5 mg in 1.0 mL of PBS/Sodium azide

Preservative:

Sodium azide

Precaution of Use:

This product contains Sodium azide: a POISONOUS AND HAZARDOUS SUBSTANCE which should be handled by trained staff only.

Handling Advice:

Avoid cycles of freezing and thawing.

Storage:

4 °C

Storage Comment:

Store at 2-8°C

Images

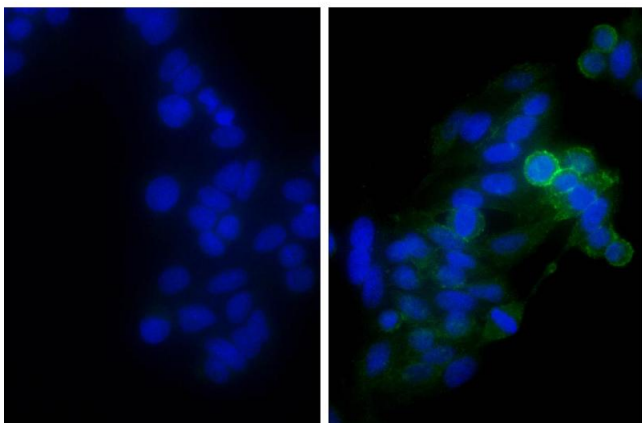


Image 1. Human epithelial carcinoma cell line HEp-2 was stained with Mouse Anti-Human CD44-UNLB, and DAPI.