

Datasheet for ABIN375906

Goat anti-Mouse IgM (Heavy Chain) Antibody (Biotin)



[Go to Product page](#)

1 Image

2 Publications

Overview

Quantity:	1 mg
Target:	IgM
Binding Specificity:	Heavy Chain
Reactivity:	Mouse
Host:	Goat
Clonality:	Polyclonal
Conjugate:	Biotin
Application:	ELISA, Flow Cytometry (FACS), Immunohistochemistry (IHC), Western Blotting (WB)

Product Details

Isotype:	IgG
Specificity:	Reacts with the heavy chain of mouse IgM as demonstrated by ELISA and flow cytometry.
Characteristics:	Source: Pooled antisera from goats hyperimmunized with mouse IgM paraproteins. To insure lot-to-lot consistency, each batch of product is tested by ELISA, PCFIA and/or flow cytometry for conformance to characteristics of a standard reference reagent.
Purification:	Affinity chromatography on pooled human Igs with light chains covalently linked to agarose

Target Details

Target:	IgM
Abstract:	IgM Products

Target Details

Target Type: Antibody

Application Details

Application Notes: Working Dilution:
<= 1 µg/10⁶ cells or 1:5,000-1:20,000
Representative data are included in this product insert.

Each laboratory should determine an optimum working titer for use in its particular application. Other applications have not been tested but use in such assays should not necessarily be excluded.

Restrictions: For Research Use only

Handling

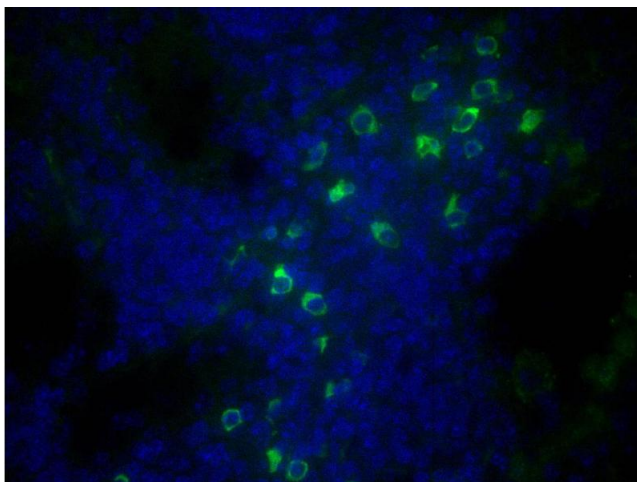
Handling Advice: Avoid cycles of freezing and thawing.

Storage: 4 °C

Publications

Product cited in: Pietrek, Brinkmann, Glowacka, Enlund, Haevemeier, Dittrich-Breiholz, Kracht, Lewitzky, Saksela, Feller, Schulz: "The role of the Kaposi Sarcoma Herpesvirus K15 SH3 binding site in inflammatory signaling and B-cell activation." in: **Journal of virology**, (2010) ([PubMed](#)).

Images



Immunohistochemistry

Image 1. Paraffin embedded mouse lymph node section was stained with Goat Anti-Mouse IgM, Human ads-BIOT and DAPI.