



[Go to Product page](#)

Datasheet for ABIN375916

Goat anti-Mouse IgG1 (Heavy Chain) Antibody (Biotin)

1 Image

1 Publication

Overview

Quantity:	1 mg
Target:	IgG1
Binding Specificity:	Heavy Chain
Reactivity:	Mouse
Host:	Goat
Clonality:	Polyclonal
Conjugate:	Biotin
Application:	ELISA, Western Blotting (WB), Immunohistochemistry (IHC), Flow Cytometry (FACS)

Product Details

Isotype:	IgG
Specificity:	Reacts with the heavy chain of mouse IgG 1 as demonstrated by ELISA and flow cytometry.
Characteristics:	Source: Pooled antisera from goats hyperimmunized with mouse IgG 1 paraproteins. To insure lot-to-lot consistency, each batch of product is tested by ELISA, PCFIA and/or flow cytometry to conform to characteristics of a standard reference reagent.
Purification:	Affinity chromatography on mouse IgG 2b covalently linked to agarose

Target Details

Target:	IgG1
Abstract:	IgG1 Products

Target Details

Target Type: Antibody

Application Details

Application Notes: Working Dilution:
<= 1 µg/10⁶ cells or 1:5,000-1:20,000
Representative data are included in this product insert.

Each laboratory should determine an optimum working titer for use in its particular application. Other applications have not been tested but use in such assays should not necessarily be excluded.

Restrictions: For Research Use only

Handling

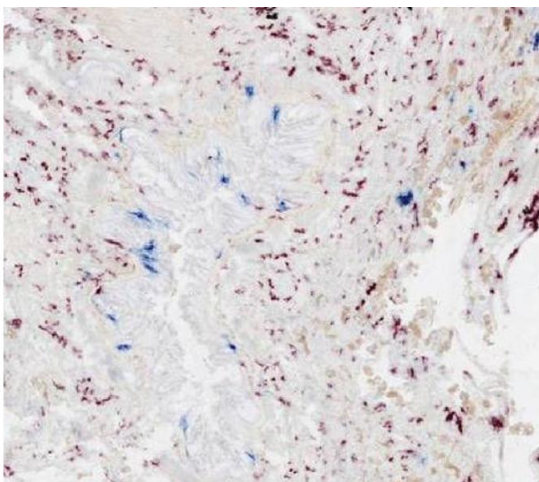
Handling Advice: Avoid cycles of freezing and thawing.

Storage: 4 °C

Publications

Product cited in: Pietrek, Brinkmann, Glowacka, Enlund, Haevemeier, Dittrich-Breiholz, Kracht, Lewitzky, Saksela, Feller, Schulz: "The role of the Kaposi Sarcoma Herpesvirus K15 SH3 binding site in inflammatory signaling and B-cell activation." in: **Journal of virology**, (2010) ([PubMed](#)).

Images



Immunofluorescence

Image 1. Frozen human lung tissue section was stained with anti-DC-SIGN followed by an AP conjugated secondary antibody and New Fuchsin. The section was then stained with anti-CD207 followed by Goat Anti-Mouse IgG1, Human ads-BIOT