

Datasheet for ABIN375945

**anti-IL2 Receptor beta antibody (Biotin)**[Go to Product page](#)**1** Image

## Overview

Quantity:	0.5 mg
Target:	IL2 Receptor beta (IL2RB)
Reactivity:	Mouse
Host:	Rat
Clonality:	Monoclonal
Conjugate:	This IL2 Receptor beta antibody is conjugated to Biotin
Application:	Flow Cytometry (FACS)

## Product Details

Immunogen:	Rat myeloma YB2/0 transfected with truncated IL-2Rbeta cDNA (YB2/0-mbetat-28)
Clone:	5H4
Isotype:	IgG2a
Specificity:	Mouse CD122, 90-100 kDa
Characteristics:	Rat Anti-Mouse CD122-BIOT
Purification:	Purified

## Target Details

Target:	IL2 Receptor beta (IL2RB)
Alternative Name:	CD122 ( <a href="#">IL2RB Products</a> )
Background:	The IL-2 receptor is a complex of three distinct polypeptide chains: (i) the $\alpha$ chain which binds

## Target Details

IL-2 with low affinity, (ii) the  $\beta$  chain that binds IL-2 with high affinity, and (ii) the common  $\gamma$  chain ( $\gamma C$ ) that does not bind IL-2. The high affinity receptor complex is an  $\alpha / \beta / \gamma$  heterotrimer with a  $K_d$  of  $1.3 \times 10^{-11}$  M. 2 In mouse spleen, CD122 is expressed on approx. 30 % of CD8 + cells and all NK cells, but < 1 % of B cells and CD4 + T lymphocytes. In the thymus, its expression is confined to CD4 - CD8 + single positive and CD4 - CD8 - double negative cells. 4 Cytoplasmic regions of the IL-2R  $\beta$  chain are involved in IL-2-mediated cellular signaling and, via the interaction of IL-2 and its receptor complex, may be involved in the generation and differentiation of T lymphocytes.

Pathways: [JAK-STAT Signaling, Growth Factor Binding](#)

## Application Details

Application Notes:

- **Applications:** FC - Quality tested , IP - Reported in literature
- **Working Dilutions:** Flow Cytometry FITC and BIOT conjugates 1 g/10<sup>6</sup> cells PE and APC conjugates 0.2 g/10<sup>6</sup> cells For flow cytometry, the suggested use of these reagents is in a final volume of 100 L

Sample Volume: 1 mL

Restrictions: For Research Use only

## Handling

Concentration: 0.5 mg/mL

Buffer: 0.5 mg in 1.0 mL of PBS/Sodium azide

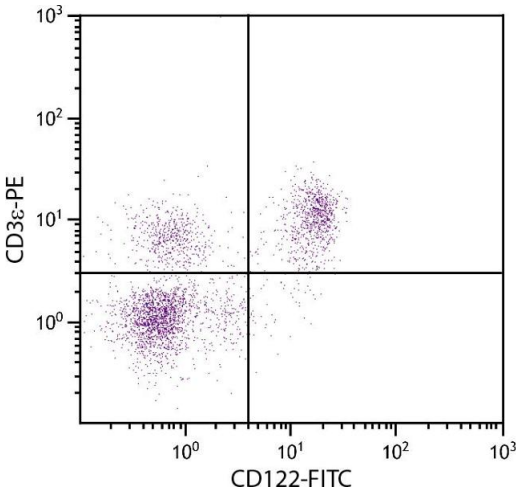
Preservative: Sodium azide

Precaution of Use: This product contains Sodium azide: a POISONOUS AND HAZARDOUS SUBSTANCE which should be handled by trained staff only.

Handling Advice: **Protect conjugated products from light.**  
Each reagent is stable for the period shown on the bottle label if stored as directed.

Storage: 4 °C

Storage Comment: Store at 2-8°C



Flow Cytometry

**Image 1.** BALB/c mouse splenocytes were stained with Rat Anti-Mouse CD112-FITC.