

Datasheet for ABIN375949

## Goat anti-Human IgM Antibody (Biotin)



[Go to Product page](#)

1 Image

1 Publication

### Overview

Quantity:	0.5 mg
Target:	IgM
Reactivity:	Human
Host:	Goat
Clonality:	Polyclonal
Conjugate:	Biotin
Application:	ELISA, Flow Cytometry (FACS)

### Product Details

Isotype:	IgG
Fragment:	F(ab') <sub>2</sub> fragment
Specificity:	Reacts with the heavy chain of human IgM
Characteristics:	Goat F(ab') <sub>2</sub> Anti-Human IgM-BIOT
Purification:	Affinity chromatography on pooled human Igs with light chains covalently linked to agarose

### Target Details

Target:	IgM
Abstract:	<a href="#">IgM Products</a>
Target Type:	Antibody

## Application Details

Application Notes:	<ul style="list-style-type: none"><li>• <b>Applications:</b> Quality tested applications include - ELISA , FLISA FC ,</li><li>• Other referenced applications include - ICC , ELISPOT , Stim</li><li>• <b>Working Dilutions:</b> ELISA HRP conjugate 1:4,000 - 1:8,000 BIOT conjugate 1:5,000 - 1:20,000 FLISA FITC, AF488, and AF555 conjugates 1:100 - 1:400 PE and AF647 conjugates 1 g/mL Flow Cytometry FITC, BIOT, and AF488 conjugates 1 g/10<sup>6</sup> cells PE and AF647 conjugates 0.1 g/10<sup>6</sup> cells For flow cytometry, the suggested use of these reagents is in a final volume of 100 L</li></ul>
--------------------	---

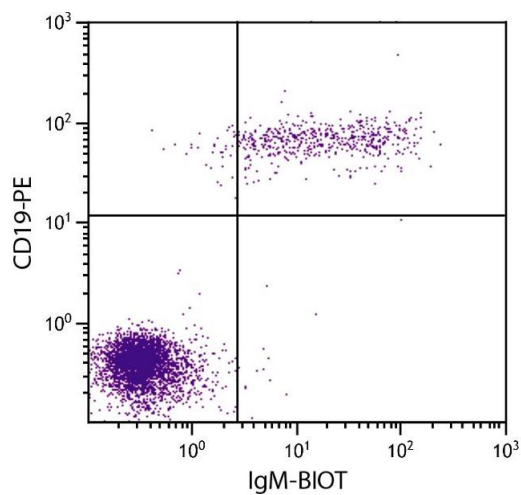
Restrictions:	For Research Use only
---------------	-----------------------

## Handling

Concentration:	0.5 mg/mL
Buffer:	0.5 mg in 1.0 mL of PBS/Sodium azide
Preservative:	Sodium azide
Precaution of Use:	This product contains Sodium azide: a POISONOUS AND HAZARDOUS SUBSTANCE which should be handled by trained staff only.
Handling Advice:	Avoid cycles of freezing and thawing.
Storage:	4 °C
Storage Comment:	Store at 2-8°C

## Publications

Product cited in:	White, Pone, Lam, Tat, Hayama, Li, Zan, Casali: "Histone Deacetylase Inhibitors Upregulate B Cell microRNAs That Silence AID and Blimp-1 Expression for Epigenetic Modulation of Antibody and Autoantibody Responses." in: <b>Journal of immunology (Baltimore, Md. : 1950)</b> , (2014) ( <a href="#">PubMed</a> ).
-------------------	--



### Flow Cytometry

**Image 1.** Human peripheral blood lymphocytes were stained with Goat F(ab')<sub>2</sub> Anti-Human IgM-BIOT and Mouse Anti-Human CD19-PE.