

Datasheet for ABIN375951

**Goat anti-Human IgD Antibody (Biotin)**[Go to Product page](#)**1** Image

## Overview

Quantity:	0.5 mg
Target:	IgD
Reactivity:	Human
Host:	Goat
Clonality:	Polyclonal
Conjugate:	Biotin
Application:	Flow Cytometry (FACS), ELISA

## Product Details

Isotype:	IgG
Fragment:	F(ab') <sub>2</sub> fragment
Specificity:	Reacts with the heavy chain of human IgD
Characteristics:	Goat F(ab') <sub>2</sub> Anti-Human IgD-BIOT
Purification:	Affinity chromatography on goat IgG covalently coupled to agarose. Gel filtration chromatography of pepsin digested antibody.

## Target Details

Target:	IgD
Abstract:	<a href="#">IgD Products</a>
Target Type:	Antibody

## Application Details

### Application Notes:

- **Applications:** Quality tested applications include - ELISA FLISA FC ,
- Other referenced applications include - IHC-FS , IHC-PS , Sep , Stim
- **Working Dilutions:** ELISA BIOT conjugate 1:5,000 - 1:20,000 FLISA FITC, AF488, and AF555 conjugates 1:100 - 1:400 PE and AF647 conjugates 1 g/mL Flow Cytometry FITC, BIOT, and AF488 conjugates 1 g/106 cells PE and AF647 conjugates 0.1 g/106 cells For flow cytometry, the suggested use of these reagents is in a final volume of 100 L

### Restrictions:

For Research Use only

## Handling

### Concentration:

0.5 mg/mL

### Buffer:

0.5 mg in 1.0 mL of PBS/Sodium azide

### Preservative:

Sodium azide

### Precaution of Use:

This product contains Sodium azide: a POISONOUS AND HAZARDOUS SUBSTANCE which should be handled by trained staff only.

### Handling Advice:

Avoid cycles of freezing and thawing.

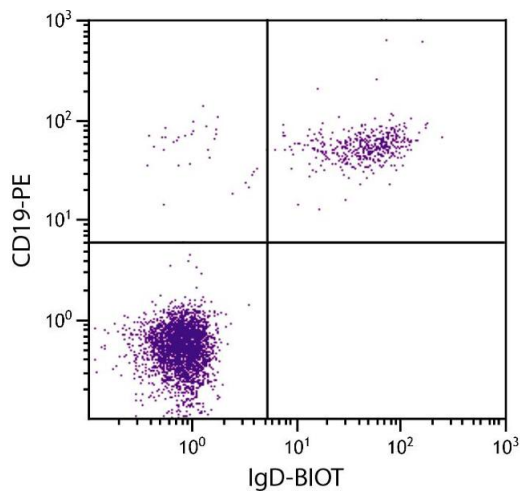
### Storage:

4 °C

### Storage Comment:

Store at 2-8°C

## Images



### Flow Cytometry

**Image 1.** Human peripheral blood lymphocytes were stained with Goat F(ab')<sub>2</sub> Anti-Human IgD-BIOT and Mouse Anti-Human CD19-PE.