

Datasheet for ABIN375966

**Goat anti-Rat Ig (Heavy & Light Chain) Antibody (Biotin)**[Go to Product page](#)**1** Image

## Overview

Quantity:	1 mg
Target:	Ig
Binding Specificity:	Heavy & Light Chain
Reactivity:	Rat
Host:	Goat
Clonality:	Polyclonal
Conjugate:	Biotin
Application:	ELISA, Flow Cytometry (FACS), Immunohistochemistry (IHC), Western Blotting (WB)

## Product Details

Isotype:	IgG
Specificity:	Reacts with the heavy and light chains of rat IgM and IgG, and with the light chains of rat IgA as demonstrated by ELISA and/or flow cytometry.
Characteristics:	Source: Pooled antisera from goats hyperimmunized with normal rat IgM and IgG To insure lot-to-lot consistency, each batch of product is tested by ELISA, PCFIA and/or flow cytometry for conformance to characteristics of a standard reference reagent.
Purification:	Affinity chromatography on human IgD covalently linked to agarose.

## Target Details

Target:	Ig
Abstract:	<a href="#">Ig Products</a>

## Application Details

---

Application Notes:

Working Dilution:

$\leq 1 \mu\text{g}/10^6$  cells or 1:5,000-1:20,000

Representative data are included in this product insert.

Each laboratory should determine an optimum working titer for use in its particular application.

Other applications have not been tested but use in such assays should not necessarily be excluded.

Restrictions:

For Research Use only

## Handling

---

Handling Advice:

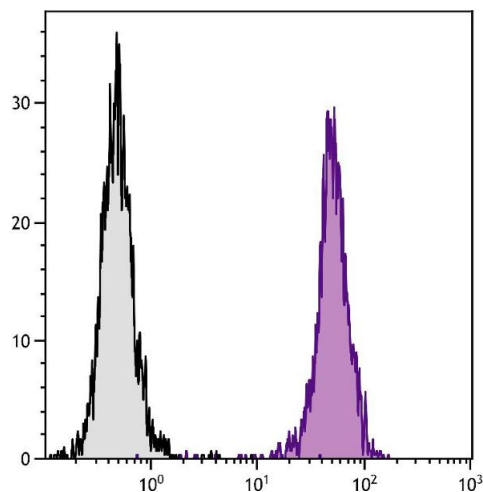
Avoid cycles of freezing and thawing.

Storage:

4 °C

## Images

---



### Flow Cytometry

**Image 1.** BALB/c mouse splenocytes were stained with Rat Anti-Mouse CD45-UNLB.