

Datasheet for ABIN375968

Goat anti-Rat IgG (Heavy Chain) Antibody (Biotin)[Go to Product page](#)**1** Image

Overview

Quantity:	1 mg
Target:	IgG
Binding Specificity:	Heavy Chain
Reactivity:	Rat
Host:	Goat
Clonality:	Polyclonal
Conjugate:	Biotin
Application:	ELISA, Immunohistochemistry (IHC), Western Blotting (WB), Flow Cytometry (FACS)

Product Details

Isotype:	IgG
Specificity:	Reacts with the heavy chain of rat IgG as demonstrated by ELISA.
Characteristics:	Source: Pooled antisera from goats hyperimmunized with normal rat IgG To insure lot-to-lot consistency, each batch of product is tested by ELISA, PCFIA and/or flow cytometry for conformance to characteristics of a standard reference reagent.
Purification:	Affinity chromatography on sheep IgG covalently linked to agarose.

Target Details

Target:	IgG
Abstract:	IgG Products

Target Details

Target Type: Antibody

Application Details

Application Notes: Working Dilution:
<= 1 µg/10⁶ cells or 1:5,000-1:20,000
Representative data are included in this product insert.

Each laboratory should determine an optimum working titer for use in its particular application. Other applications have not been tested but use in such assays should not necessarily be excluded.

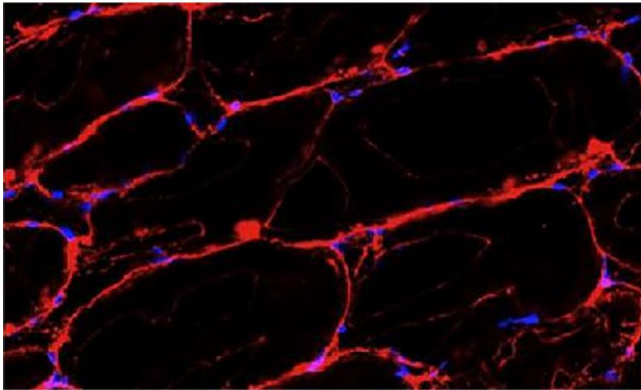
Restrictions: For Research Use only

Handling

Handling Advice: Avoid cycles of freezing and thawing.

Storage: 4 °C

Images



Immunofluorescence

Image 1. Frozen rat gastrocnemius muscle section was stained with Goat Anti-Rat IgG-BIOT