

Datasheet for ABIN375971

Mouse anti-Rat IgG1 (Fc Region) Antibody (Biotin)[Go to Product page](#)**1** Image

Overview

Quantity:	0.5 mg
Target:	IgG1
Binding Specificity:	Fc Region
Reactivity:	Rat
Host:	Mouse
Clonality:	Monoclonal
Conjugate:	Biotin
Application:	ELISA, Flow Cytometry (FACS)

Product Details

Immunogen:	Rat IgG1 hybridoma
Clone:	G11C5
Isotype:	IgG2b
Specificity:	Reacts with the gamma 1 heavy chain (Fc) of Rat IgG1.
Characteristics:	Mouse Anti-Rat IgG1-BIOT
Purification:	Purified

Target Details

Target:	IgG1
Abstract:	IgG1 Products

Target Details

Target Type: Antibody

Application Details

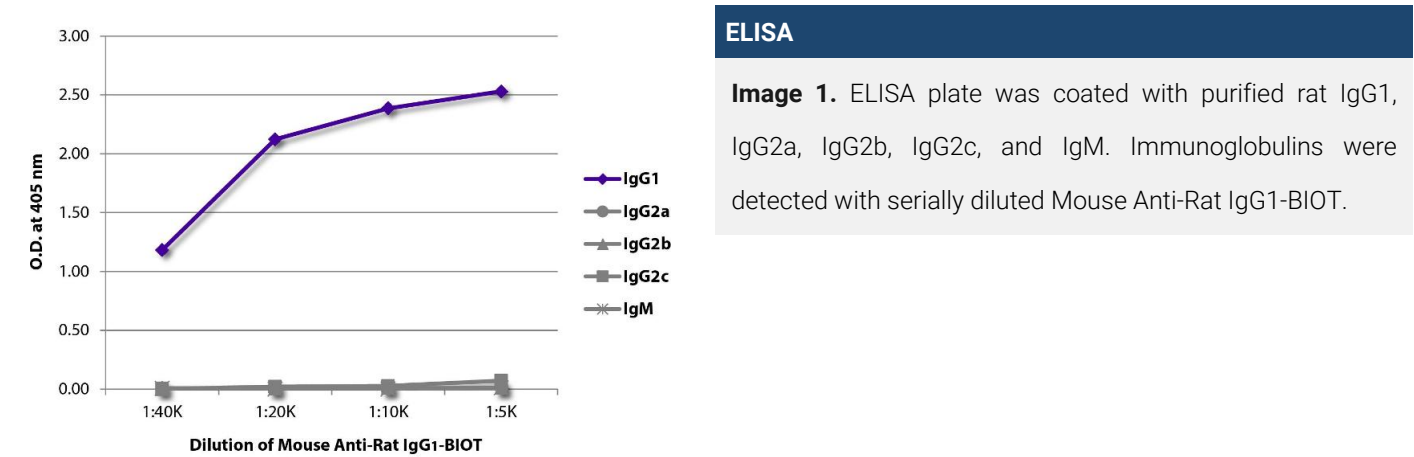
- Application Notes:
- **Applications:** FC - Quality tested ELISA - Quality tested FLISA - Quality tested IHC-FS - Reported in literature , ELISPOT - Reported in literature
 - **Working Dilutions:** Flow Cytometry FITC, BIOT, and AF488 conjugates 1 g/106 cells PE, CY5, and AF647 conjugates 0.1 g/106 cells For flow cytometry, the suggested use of these reagents is in a final volume of 100 L ELISA AP conjugate 1:1,000 - 1:4,000 HRP conjugate 1:4,000 - 1:8,000 BIOT conjugate 1:5,000 - 1:10,000 FLISA FITC and AF488 conjugates 1:200 - 1:400 AF555 conjugate 1:100 - 1:400 PE, CY5, and AF647 conjugates 1 g/mL

Restrictions: For Research Use only

Handling

- Concentration: 0.5 mg/mL
- Buffer: 0.5 mg in 1.0 mL of PBS/Sodium azide
- Preservative: Sodium azide
- Precaution of Use: This product contains Sodium azide: a POISONOUS AND HAZARDOUS SUBSTANCE which should be handled by trained staff only.
- Handling Advice: Avoid cycles of freezing and thawing.
- Storage: 4 °C
- Storage Comment: Store at 2-8°C

Images



ELISA

Image 1. ELISA plate was coated with purified rat IgG1, IgG2a, IgG2b, IgG2c, and IgM. Immunoglobulins were detected with serially diluted Mouse Anti-Rat IgG1-BIOT.