

Datasheet for ABIN375975

Mouse anti-Rat Immunoglobulin kappa Chain Complex (Igk) Antibody (Biotin)



[Go to Product page](#)

1 Image

Overview

Quantity:	0.5 mg
Target:	Igk
Reactivity:	Rat
Host:	Mouse
Clonality:	Monoclonal
Conjugate:	Biotin
Application:	Flow Cytometry (FACS), ELISA

Product Details

Immunogen:	Rat hybridoma
Clone:	K4F5
Isotype:	IgG2a
Specificity:	Rat
Characteristics:	Mouse Anti-Rat Kappa-BIOT
Purification:	Purified

Target Details

Target:	Igk
Alternative Name:	Kappa (Igk Products)

Application Details

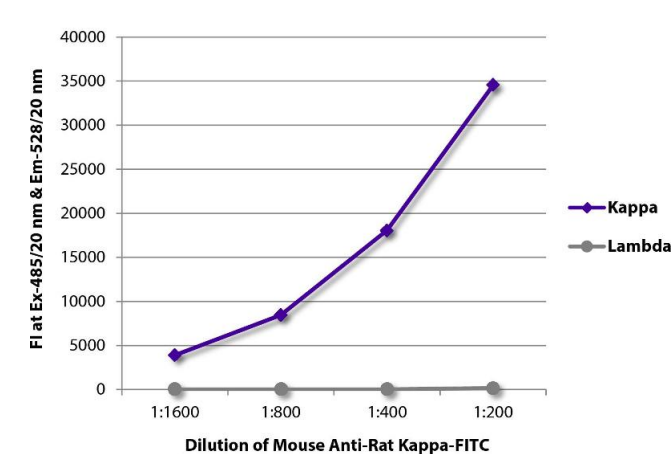
Application Notes:	<ul style="list-style-type: none">• Applications: FC - Quality tested , ELISA - Quality tested FLISA - Quality tested IHC-FS - Reported in literature , WB• Working Dilutions: Flow Cytometry FITC and BIOT conjugates 1 g/106 cells PE conjugate 0.1 g/106 cells For flow cytometry, the suggested use of these reagents is in a final volume of 100 L ELISA AP conjugate 1:1,000 - 1:2,000 HRP conjugate 1:4,000 - 1:8,000 BIOT conjugate 1:5,000 - 1:10,000 FLISA FITC conjugate 1:200 - 1:400 PE conjugate 1 g/mL
--------------------	------------------------------------------------------------------------------------------------------------------------------------------------------------------------------------------------------------------------------------------------------------------------------------------------------------------------------------------------------------------------------------------------------------------------------------------------------------------------------------------------------------------------------------------------------------

Sample Volume:	1 mL
Restrictions:	For Research Use only

Handling

Concentration:	0.5 mg/mL
Buffer:	The purified (UNLB) antibody is supplied as 0.5 mg of purified immunoglobulin in 1.0 mL of borate buffered saline, pH 8.2. No preservatives or amine-containing buffer salts added.
Preservative:	Without preservative
Handling Advice:	Protect conjugated products from light. Each reagent is stable for the period shown on the bottle label if stored as directed.
Storage:	4 °C
Storage Comment:	Store at 2-8°C

Images



ELISA

Image 1. FLISA plate was coated with purified rat IgG1κ, IgG2aλ, IgG2aλ, IgG2bκ, IgG2bλ, IgG2cκ, IgMκ, and IgMλ. Immunoglobulins were detected with serially diluted Mouse Anti-Rat Kappa-FITC.