

Datasheet for ABIN375982

Rat anti-Rabbit Ig Antibody (Biotin)



[Go to Product page](#)

1 Image

Overview

Quantity:	0.5 mg
Target:	Ig
Reactivity:	Rabbit
Host:	Rat
Clonality:	Monoclonal
Conjugate:	Biotin
Application:	ELISA, Flow Cytometry (FACS)

Product Details

Immunogen:	Rabbit IgG and IgM
Clone:	SB87a
Isotype:	IgG2a
Specificity:	Rabbit IgG, IgM, and IgA Minimal reactivity to human, mouse, rat, hamster, goat, sheep, porcine, canine, and rhesus IgG and guinea pig serum
Characteristics:	Rat Anti-Rabbit Ig-BIOT
Purification:	Purified

Target Details

Target:	Ig
Abstract:	Ig Products

Application Details

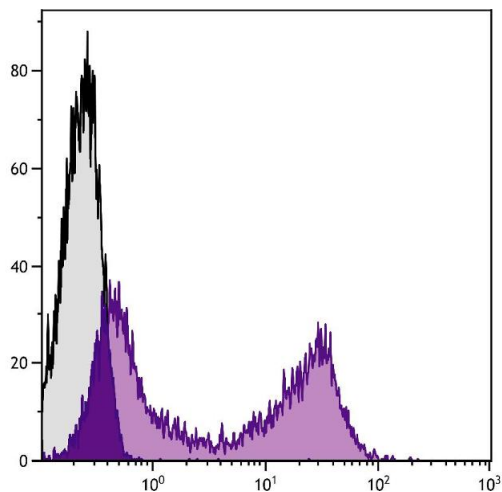
Application Notes:	<ul style="list-style-type: none">• Applications: ELISA - Quality tested , FLISA - Quality tested FC - Quality tested• Working Dilutions: ELISA HRP conjugate 1:4,000 - 1:8,000 BIOT conjugate 1:5,000 - 1:10,000 FLISA PE conjugate 1 g/mL Flow Cytometry BIOT conjugate 1 g/10⁶ cells PE and SPRD conjugates 0.1 g/10⁶ cells For flow cytometry, the suggested use of these reagents is in a final volume of 100 l
--------------------	---

Restrictions:	For Research Use only
---------------	-----------------------

Handling

Concentration:	0.5 mg/mL
Buffer:	0.5 mg in 1.0 mL of PBS/Sodium azide
Preservative:	Sodium azide
Precaution of Use:	This product contains Sodium azide: a POISONOUS AND HAZARDOUS SUBSTANCE which should be handled by trained staff only.
Handling Advice:	Avoid cycles of freezing and thawing.
Storage:	4 °C
Storage Comment:	Store at 2-8°C

Images



Flow Cytometry

Image 1. Rabbit peripheral blood lymphocytes were stained with Rat Anti-Rabbit Ig-BIOT.