



[Go to Product page](#)

Datasheet for ABIN375997

## Rabbit anti-Goat IgG (Heavy & Light Chain) Antibody (Biotin)

### 1 Image

#### Overview

Quantity:	1 mg
Target:	IgG
Binding Specificity:	Heavy & Light Chain
Reactivity:	Goat
Host:	Rabbit
Clonality:	Polyclonal
Conjugate:	Biotin
Application:	ELISA, Immunohistochemistry (IHC), Western Blotting (WB), Flow Cytometry (FACS)

#### Product Details

Isotype:	IgG
Specificity:	Reacts with the heavy and light chains of goat IgG as demonstrated by ELISA.
Characteristics:	Source: Pooled antisera from rabbits hyperimmunized with goat IgG. To insure lot-to-lot consistency, each batch of product is tested by ELISA and PCFIA for conformance with characteristics of a standard reference reagent.
Purification:	Affinity chromatography on rabbit IgM covalently linked to agarose

#### Target Details

Target:	IgG
Abstract:	<a href="#">IgG Products</a>

## Target Details

---

Target Type: Antibody

## Application Details

---

Application Notes: Working Dilution:  
<= 1 µg/10<sup>6</sup> cells or 1:5,000-1:20,000  
Representative data are included in this product insert.

Each laboratory should determine an optimum working titer for use in its particular application. Other applications have not been tested but use in such assays should not necessarily be excluded.

Restrictions: For Research Use only

## Handling

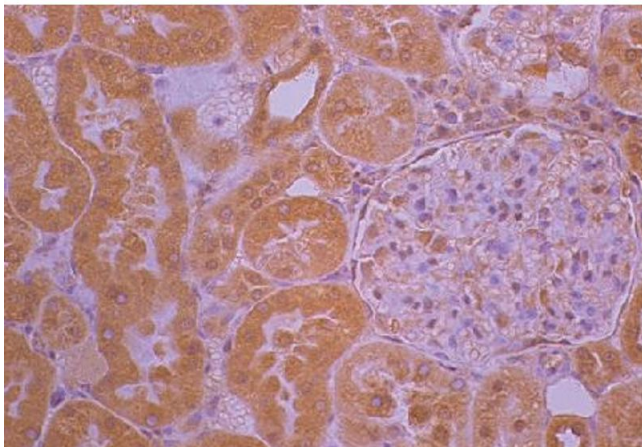
---

Handling Advice: Avoid cycles of freezing and thawing.

Storage: 4 °C

## Images

---



### Immunohistochemistry

**Image 1.** Paraffin embedded rat kidney section post 30% blood volume loss and treatment with ketoprofen was stained with anti-IL-1 followed by Rabbit Anti-Goat IgG(H+L)-BIOT, HRP conjugated streptavidin, DAB, and hematoxylin.

Image from Guedes FS Jr, Cruz DS, Rodrigues MM, Silva LM, Amorim RL, Vianna PT, et al. Renal histology and immunohistochemistry after acute hemorrhage in rats under sevoflurane and ketoprofen effect. Acta Cir Bras. 2012;27:37-42. Figure 3