



[Go to Product page](#)

Datasheet for ABIN376006

Donkey anti-Goat IgG (Heavy & Light Chain) Antibody (Biotin)

1 Image

Overview

Quantity:	1 mg
Target:	IgG
Binding Specificity:	Heavy & Light Chain
Reactivity:	Goat
Host:	Donkey
Clonality:	Polyclonal
Conjugate:	Biotin
Application:	ELISA, Immunohistochemistry (IHC), Western Blotting (WB), Flow Cytometry (FACS)

Product Details

Isotype:	IgG
Specificity:	Reacts with the heavy and light chains of Goat IgG as demonstrated by ELISA.
Characteristics:	Source: Pooled antisera from donkey hyperimmunized with goat IgG. To insure lot-to-lot consistency, each batch of product is tested by ELISA and/or PCFIA for conformance to characteristics of a standard reference reagent.
Purification:	Affinity chromatography on pooled rat IgG covalently linked to agarose.

Target Details

Target:	IgG
Abstract:	IgG Products

Target Details

Target Type: Antibody

Application Details

Application Notes: Working Dilution:
<= 1 µg/10⁶ cells or 1:5,000-1:20,000
Representative data are included in this product insert.

Each laboratory should determine an optimum working titer for use in its particular application. Other applications have not been tested but use in such assays should not necessarily be excluded.

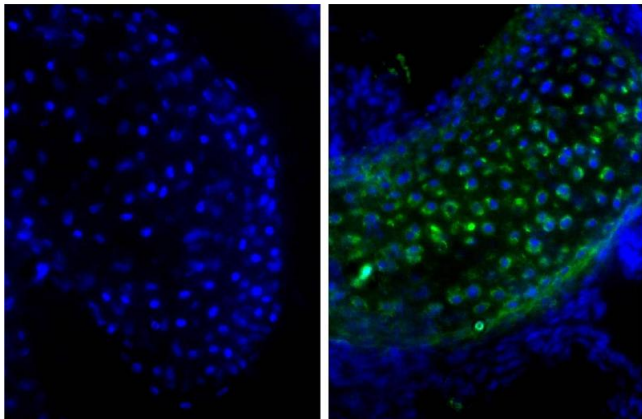
Restrictions: For Research Use only

Handling

Handling Advice: Avoid cycles of freezing and thawing.

Storage: 4 °C

Images



Immunofluorescence

Image 1. Frozen newborn mouse cartilage section was stained with Goat Anti-Type II Collagen-UNLB, and DAPI.