

Datasheet for ABIN376007

**Donkey anti-Rat IgG (Heavy & Light Chain) Antibody (Biotin)**[Go to Product page](#)**1** Image

## Overview

Quantity:	1 mg
Target:	IgG
Binding Specificity:	Heavy & Light Chain
Reactivity:	Rat
Host:	Donkey
Clonality:	Polyclonal
Conjugate:	Biotin
Application:	ELISA, Immunohistochemistry (IHC), Western Blotting (WB), Flow Cytometry (FACS)

## Product Details

Isotype:	IgG
Specificity:	Reacts with the heavy and light chains of Rat IgG as demonstrated by ELISA.
Characteristics:	Source: Pooled antisera from donkey hyperimmunized with rat IgG. To insure lot-to-lot consistency, each batch of product is tested by ELISA and/or PCFIA for conformance to characteristics of a standard reference reagent.
Purification:	Affinity chromatography on goat IgG covalently linked to agarose.

## Target Details

Target:	IgG
Abstract:	<a href="#">IgG Products</a>

## Target Details

---

Target Type: Antibody

## Application Details

---

Application Notes: Working Dilution:  
<= 1 µg/10<sup>6</sup> cells or 1:5,000-1:20,000  
Representative data are included in this product insert.

Each laboratory should determine an optimum working titer for use in its particular application. Other applications have not been tested but use in such assays should not necessarily be excluded.

Restrictions: For Research Use only

## Handling

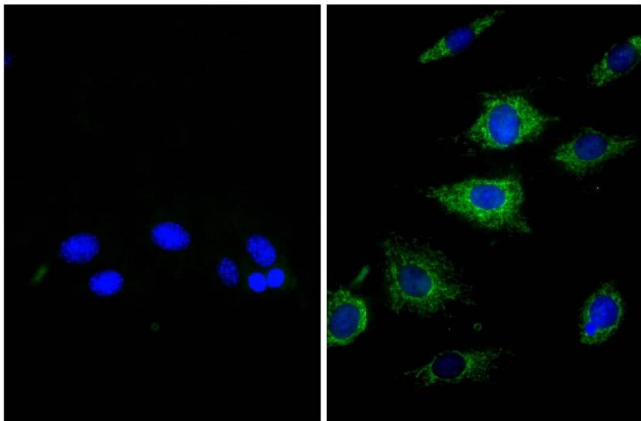
---

Handling Advice: Avoid cycles of freezing and thawing.

Storage: 4 °C

## Images

---



**Image 1.** NIH/Swiss mouse fibroblast cell line 3T3 was stained with Rat Anti-β-Actin-UNLB (right) followed by Donkey Anti-Rat IgG(H+L), Mouse SP ads-BIOT, and DAPI.