

Datasheet for ABIN376020
anti-CD42b antibody (Biotin)



[Go to Product page](#)

1 Image

Overview

| | |
|--------------|---|
| Quantity: | 100 tests |
| Target: | CD42b (GP1BA) |
| Reactivity: | Human |
| Host: | Mouse |
| Clonality: | Monoclonal |
| Conjugate: | This CD42b antibody is conjugated to Biotin |
| Application: | Flow Cytometry (FACS) |

Product Details

| | |
|------------------|-----------------------------|
| Immunogen: | Human plasma membrane |
| Clone: | MM2-174 |
| Isotype: | IgG1 |
| Specificity: | Human CD42b, Mr 145 kDa |
| Characteristics: | Mouse Anti-Human CD42b-BIOT |
| Purification: | Purified |

Target Details

| | |
|-------------------|--|
| Target: | CD42b (GP1BA) |
| Alternative Name: | CD42b (GP1BA Products) |
| Background: | CD42b, also known as gplb, is a two-chain membrane glycoprotein that forms a noncovalent |

Target Details

complex with gpIX (CD42a) on the surface of platelets and megakaryocytes. Binding of the gpIb/gpIX heterodimer to von Willebrand factor bound to exposed subendothelial surfaces is essential for platelet adhesion at sites of injury.

Application Details

Application Notes:

- **Applications:** FC - Quality tested , IHC-FS - Reported in literature , IHC-PS - Reported in literature , ICC - Reported in literature , IP - Reported in literature , WB - Reported in literature
- **Working Dilutions:** Flow Cytometry Purified (UNLB) antibody 1 g/106 cells FITC, BIOT, PE, APC, and SPRD conjugates 10 L/106 cells For flow cytometry, the suggested use of these reagents is in a final volume of 100 L

Restrictions:

For Research Use only

Handling

Buffer:

100 tests in 1.0 mL of PBS/Sodium azide

Preservative:

Sodium azide

Precaution of Use:

This product contains Sodium azide: a POISONOUS AND HAZARDOUS SUBSTANCE which should be handled by trained staff only.

Handling Advice:

Protect conjugated products from light.

Each reagent is stable for the period shown on the bottle label if stored as directed.

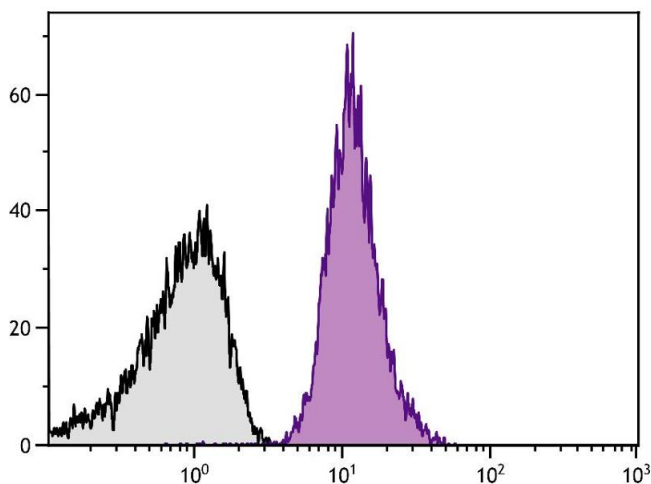
Storage:

4 °C

Storage Comment:

Store at 2-8°C

Images



Flow Cytometry

Image 1. Human peripheral blood platelets were stained with Mouse Anti-Human CD42b-PE.