

Datasheet for ABIN376029

**Rabbit anti-Mouse IgG (Heavy & Light Chain) Antibody (Biotin)**[Go to Product page](#)**1** Image

## Overview

Quantity:	1 mg
Target:	IgG
Binding Specificity:	Heavy & Light Chain
Reactivity:	Mouse
Host:	Rabbit
Clonality:	Polyclonal
Conjugate:	Biotin
Application:	ELISA, Immunohistochemistry (IHC), Western Blotting (WB), Flow Cytometry (FACS)

## Product Details

Isotype:	IgG
Specificity:	Reacts with the heavy and light chains of mouse IgG 1, IgG 2a, IgG 2b and IgG 3, and with the light chains of mouse IgM and IgA as demonstrated by ELISA and flow cytometry.
Characteristics:	Source: Pooled antisera from rabbits hyperimmunized with mouse IgG paraproteins. To insure lot-to-lot consistency, each batch of product is tested by ELISA, PCFIA and/or flow cytometry for conformance to characteristics of a standard reference reagent.
Purification:	Affinity chromatography on Goat IgG covalently linked to agarose.

## Target Details

Target:	IgG
---------	-----

Abstract:	<a href="#">IgG Products</a>
-----------	------------------------------

## Target Details

---

Target Type: Antibody

## Application Details

---

Application Notes: Working Dilution:  
<= 1 µg/10<sup>6</sup> cells or 1:5,000-1:20,000  
Representative data are included in this product insert.

Each laboratory should determine an optimum working titer for use in its particular application. Other applications have not been tested but use in such assays should not necessarily be excluded.

Restrictions: For Research Use only

## Handling

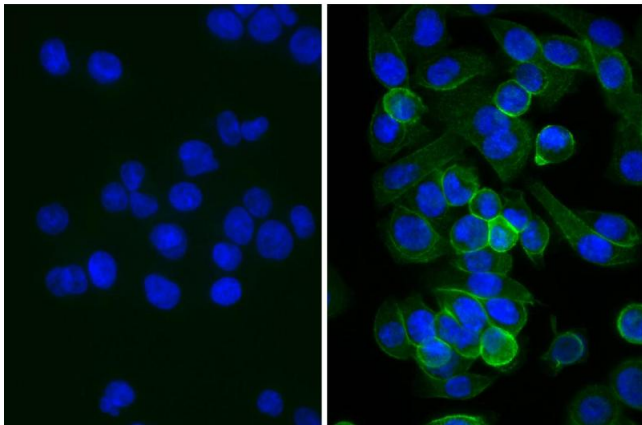
---

Handling Advice: Avoid cycles of freezing and thawing.

Storage: 4 °C

## Images

---



### Immunofluorescence

**Image 1.** Human pancreatic carcinoma cell line MIA PaCa-2 was stained with Mouse Anti-Human CD44-UNLB, and DAPI.