

Datasheet for ABIN376057

Mouse anti-Rat IgG2b Antibody (Cy5)[Go to Product page](#)**1** Image

Overview

Quantity:	0.1 mg
Target:	IgG2b
Reactivity:	Rat
Host:	Mouse
Clonality:	Monoclonal
Conjugate:	Cy5
Application:	ELISA, Flow Cytometry (FACS)

Product Details

Immunogen:	Rat IgG2b hybridoma
Clone:	2B10A8
Isotype:	IgG2b
Specificity:	Rat IgG2b
Characteristics:	Mouse Anti-Rat IgG2b-CY5
Purification:	Purified

Target Details

Target:	IgG2b
Abstract:	IgG2b Products
Target Type:	Antibody

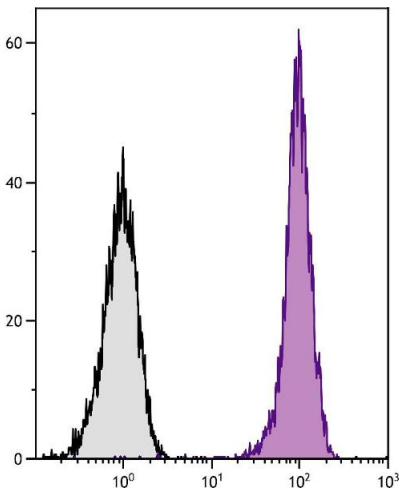
Application Details

Application Notes:	<ul style="list-style-type: none">• Applications: FC - Quality tested , ELISA - Quality tested , FLISA - Quality tested IHC-FS , WB• Working Dilutions: Flow Cytometry FITC, BIMA, and AF488 conjugates 0.3 g/106 cells PE, CY5, and AF647 conjugates 0.1 g/106 cells For flow cytometry, the suggested use of these reagents is in a final volume of 100 L ELISA AP conjugate 1:1,000 - 1:4,000 HRP conjugate 1:4,000 - 1:8,000 BIMA conjugate 1:5,000 - 1:10,000 FLISA FITC, AF488, and AF555 conjugates 1:200 - 1:400 PE, CY5, and AF647 conjugates 1 g/mL
Comment:	Excitation / Emission wavelength: 652 nm / 672 nm
Restrictions:	For Research Use only

Handling

Concentration:	0.5 mg/mL
Buffer:	0.5 mg in 1.0 mL of PBS/Sodium azide
Preservative:	Sodium azide
Precaution of Use:	This product contains Sodium azide: a POISONOUS AND HAZARDOUS SUBSTANCE which should be handled by trained staff only.
Handling Advice:	Protect conjugated products from light. Each reagent is stable for the period shown on the bottle label if stored as directed.
Storage:	4 °C
Storage Comment:	Store at 2-8°C

Images



Flow Cytometry

Image 1. BALB/c mouse splenocytes were stained with Rat Anti-Mouse CD45-UNLB.