

Datasheet for ABIN376081

Rabbit IgG isotype control (FITC)[Go to Product page](#)**1** Image

Overview

| | |
|--------------|------------------------------|
| Quantity: | 100 tests |
| Target: | IgG |
| Host: | Rabbit |
| Clonality: | Polyclonal |
| Conjugate: | FITC |
| Application: | ELISA, Flow Cytometry (FACS) |

Product Details

| | |
|------------------|-----------------|
| Isotype: | IgG |
| Characteristics: | Rabbit IgG-FITC |
| Purification: | Purified |

Target Details

| | |
|--------------|------------------------------|
| Target: | IgG |
| Abstract: | IgG Products |
| Target Type: | Antibody |

Application Details

| | |
|--------------------|---|
| Application Notes: | <ul style="list-style-type: none">• Applications: Quality tested applications include - FC , ELISA , FLISA• Other referenced applications include - IHC-FS , IHC-PS , IHC-WM , ICC , WB , IP , ChIP , Microarray , Block , In vitro control , In vivo control |
|--------------------|---|

Application Details

- **Working Dilutions:** Flow Cytometry Purified (UNLB) antibody 1 µg/10⁶ cells BIOT conjugate 1 µg/10⁶ cells FITC and PE conjugates 10 µg/10⁶ cells For flow cytometry, the suggested use of these reagents is in a final volume of 100 µL

Comment: Excitation/Emission wavelength: 494 nm/514 nm

Restrictions: For Research Use only

Handling

Buffer: 100 tests in 1.0 mL of PBS/Sodium azide

Preservative: Sodium azide

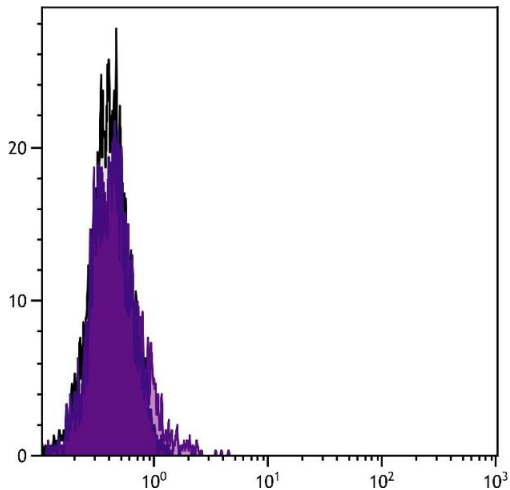
Precaution of Use: This product contains Sodium azide: a POISONOUS AND HAZARDOUS SUBSTANCE which should be handled by trained staff only.

Handling Advice: **Protect conjugated products from light.**
Each reagent is stable for the period shown on the bottle label if stored as directed.

Storage: 4 °C

Storage Comment: Store at 2-8°C

Images



Flow Cytometry

Image 1. Human peripheral blood lymphocytes were stained with Rabbit IgG-FITC.