

Datasheet for ABIN376092

Goat anti-Mouse IgM (Heavy Chain) Antibody (FITC)[1 Image](#)[1 Publication](#)[Go to Product page](#)

Overview

Quantity:	1 mg
Target:	IgM
Binding Specificity:	Heavy Chain
Reactivity:	Mouse
Host:	Goat
Clonality:	Polyclonal
Conjugate:	FITC
Application:	ELISA, Flow Cytometry (FACS), Immunohistochemistry (IHC)

Product Details

Isotype:	IgG
Specificity:	Reacts with the heavy chain of mouse IgM as demonstrated by ELISA and flow cytometry.
Characteristics:	Source: Pooled antisera from goats hyperimmunized with mouse IgM paraproteins. To insure lot-to-lot consistency, each batch of product is tested by ELISA, PCFIA and/or flow cytometry for conformance to characteristics of a standard reference reagent.
Purification:	Affinity chromatography on pooled rabbit IgM + IgG covalently linked to agarose.

Target Details

Target:	IgM
Abstract:	IgM Products

Target Details

Target Type: Antibody

Application Details

Application Notes: Working Dilution:
<= 1 µg/10⁶ cells
Representative data are included in this product insert.

Each laboratory should determine an optimum working titer for use in its particular application.
Other applications have not been tested but use in such assays should not necessarily be excluded.

Comment: Excitation/Emission wavelength: 494 nm/514 nm

Restrictions: For Research Use only

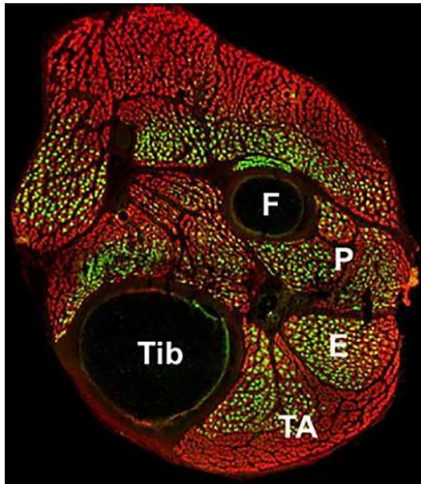
Handling

Handling Advice: **Protect conjugated products from light.**
Each reagent is stable for the period shown on the bottle label if stored as directed.

Storage: 4 °C

Publications

Product cited in: Pamuk, Lapchak, Rani, Pine, Dalle Luca, Tsokos: "Spleen Tyrosine Kinase Inhibition Prevents Tissue Damage After Ischemia Reperfusion Injury." in: **American journal of physiology. Gastrointestinal and liver physiology**, (2010) ([PubMed](#)).



Immunofluorescence

Image 1. Frozen mouse skeletal muscle tissue was stained with anti-myosin heavy chain and anti-myosin heavy chain type I followed by Goat Anti-Mouse IgG, Human ads-AF555