



[Go to Product page](#)

Datasheet for ABIN376127

Goat anti-Human Ig Antibody (FITC)

1 Image

Overview

Quantity:	0.5 mg
Target:	Ig
Reactivity:	Human
Host:	Goat
Clonality:	Polyclonal
Conjugate:	FITC
Application:	ELISA, Flow Cytometry (FACS)

Product Details

Isotype:	IgG
Fragment:	F(ab') ₂ fragment
Specificity:	Reacts with the heavy and light chains of human IgG, IgM, and IgA
Characteristics:	Goat F(ab') ₂ Anti-Human Ig-FITC
Purification:	Gel filtration chromatography of pepsin digested antibody.

Target Details

Target:	Ig
Abstract:	Ig Products

Application Details

- Application Notes:
- **Applications:** Quality tested applications include - ELISA , FLISA FC ,
 - Other referenced applications include - ELISPOT , IHC-FS , Stim
 - **Working Dilutions:** ELISA BIOT conjugate 1:5,000 - 1:20,000 FLISA FITC, AF488, and AF555 conjugates 1:100 - 1:400 PE conjugate 1 g/mL Flow Cytometry FITC, BIOT, and AF488 conjugates 1 g/10⁶ cells PE conjugate 0.1 g/10⁶ cells For flow cytometry, the suggested use of these reagents is in a final volume of 100 L

Comment: Excitation/Emission wavelength: 494 nm/514 nm

Restrictions: For Research Use only

Handling

Concentration: 0.5 mg/mL

Buffer: 0.5 mg in 1.0 mL of PBS/Sodium azide

Preservative: Sodium azide

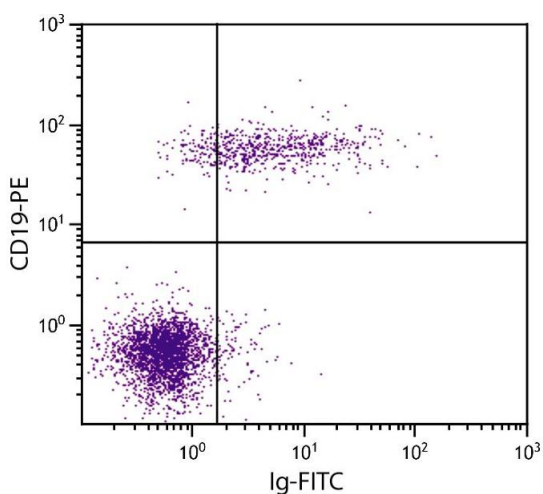
Precaution of Use: This product contains Sodium azide: a POISONOUS AND HAZARDOUS SUBSTANCE which should be handled by trained staff only.

Handling Advice: **Protect conjugated products from light.**
Each reagent is stable for the period shown on the bottle label if stored as directed.

Storage: 4 °C

Storage Comment: Store at 2-8°C

Images



Flow Cytometry

Image 1. Human peripheral blood lymphocytes were stained with Goat F(ab')₂ Anti-Human Ig-FITC.