

Datasheet for ABIN376128

**Goat anti-Human IgM (Heavy Chain) Antibody (FITC)**[Go to Product page](#)**1** Image

## Overview

Quantity:	1 mg
Target:	IgM
Binding Specificity:	Heavy Chain
Reactivity:	Human
Host:	Goat
Clonality:	Polyclonal
Conjugate:	FITC
Application:	ELISA, Flow Cytometry (FACS), Immunohistochemistry (IHC)

## Product Details

Isotype:	IgG
Specificity:	Reacts with the heavy chain of human IgM as demonstrated by ELISA and flow cytometry.
Characteristics:	Source: Pooled antisera from goats hyperimmunized with human IgM paraproteins. To insure lot-to-lot consistency, each batch of product is tested by ELISA, PCFIA and/or flow cytometry for conformance to characteristics of a standard reference reagent.
Purification:	Affinity chromatography on pooled rabbit IgM + IgG covalently linked to agarose.

## Target Details

Target:	IgM
Abstract:	<a href="#">IgM Products</a>

## Target Details

Target Type: Antibody

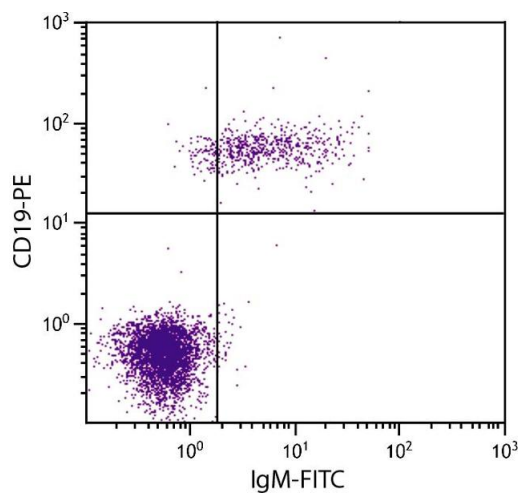
## Application Details

Application Notes:	Working Dilution:  ≤ 1 µg/10 <sup>6</sup> cells  Representative data are included in this product insert.  Each laboratory should determine an optimum working titer for use in its particular application. Other applications have not been tested but use in such assays should not necessarily be excluded.
Comment:	Excitation/Emission wavelength: 494 nm/514 nm
Restrictions:	For Research Use only

## Handling

Handling Advice:	<b>Protect conjugated products from light.</b>  Each reagent is stable for the period shown on the bottle label if stored as directed.
Storage:	4 °C

## Images



### Flow Cytometry

**Image 1.** Human peripheral blood lymphocytes were stained with Goat Anti-Human IgM-FITC and Mouse Anti-Human CD19-PE.