

Datasheet for ABIN376130

Goat anti-Human IgD (Heavy Chain) Antibody (FITC)[Go to Product page](#)**1** Image

Overview

Quantity:	1 mg
Target:	IgD
Binding Specificity:	Heavy Chain
Reactivity:	Human
Host:	Goat
Clonality:	Polyclonal
Conjugate:	FITC
Application:	Flow Cytometry (FACS), ELISA

Product Details

Isotype:	IgG
Specificity:	Reacts with the heavy chain of human IgD as demonstrated by ELISA and flow cytometry.
Characteristics:	Source: Pooled antisera from goats hyperimmunized with human IgD paraproteins. To insure lot-to-lot consistency, each batch of product is tested by ELISA, PCFIA and/or flow cytometry for conformance to characteristics of a standard reference reagent.
Purification:	Affinity chromatography on pooled IgG covalently linked to agarose.

Target Details

Target:	IgD
Abstract:	IgD Products

Target Details

Target Type: Antibody

Application Details

Application Notes: Working Dilution:
<= 1 µg/10⁶ cells
Representative data are included in this product insert.

Each laboratory should determine an optimum working titer for use in its particular application.
Other applications have not been tested but use in such assays should not necessarily be excluded.

Comment: Excitation/Emission wavelength: 494 nm/514 nm

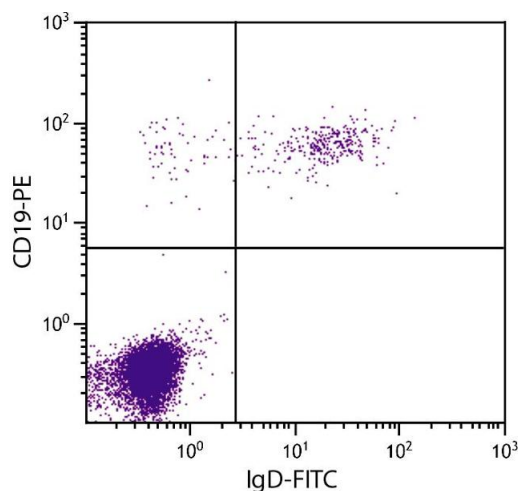
Restrictions: For Research Use only

Handling

Handling Advice: **Protect conjugated products from light.**
Each reagent is stable for the period shown on the bottle label if stored as directed.

Storage: 4 °C

Images



Flow Cytometry

Image 1. Human peripheral blood lymphocytes were stained with Goat Anti-Human IgD-FITC and Mouse Anti-Human CD19-PE.