

Datasheet for ABIN376131

Goat anti-Human IgD Antibody (FITC)**1** Image[Go to Product page](#)

Overview

Quantity:	0.5 mg
Target:	IgD
Reactivity:	Human
Host:	Goat
Clonality:	Polyclonal
Conjugate:	FITC
Application:	Flow Cytometry (FACS), ELISA

Product Details

Isotype:	IgG
Fragment:	F(ab') ₂ fragment
Specificity:	Reacts with the heavy chain of human IgD
Characteristics:	Goat F(ab') ₂ Anti-Human IgD-FITC
Purification:	Affinity chromatography on goat IgG covalently coupled to agarose. Gel filtration chromatography of pepsin digested antibody.

Target Details

Target:	IgD
Abstract:	IgD Products
Target Type:	Antibody

Application Details

Application Notes:

- **Applications:** Quality tested applications include - ELISA FLISA FC ,
- Other referenced applications include - IHC-FS , IHC-PS , Sep , Stim
- **Working Dilutions:** ELISA BIOT conjugate 1:5,000 - 1:20,000 FLISA FITC, AF488, and AF555 conjugates 1:100 - 1:400 PE and AF647 conjugates 1 g/mL Flow Cytometry FITC, BIOT, and AF488 conjugates 1 g/10⁶ cells PE and AF647 conjugates 0.1 g/10⁶ cells For flow cytometry, the suggested use of these reagents is in a final volume of 100 L

Comment:

Excitation/Emission wavelength: 494 nm/514 nm

Restrictions:

For Research Use only

Handling

Concentration:

0.5 mg/mL

Buffer:

0.5 mg in 1.0 mL of PBS/Sodium azide

Preservative:

Sodium azide

Precaution of Use:

This product contains Sodium azide: a POISONOUS AND HAZARDOUS SUBSTANCE which should be handled by trained staff only.

Handling Advice:

Protect conjugated products from light.

Each reagent is stable for the period shown on the bottle label if stored as directed.

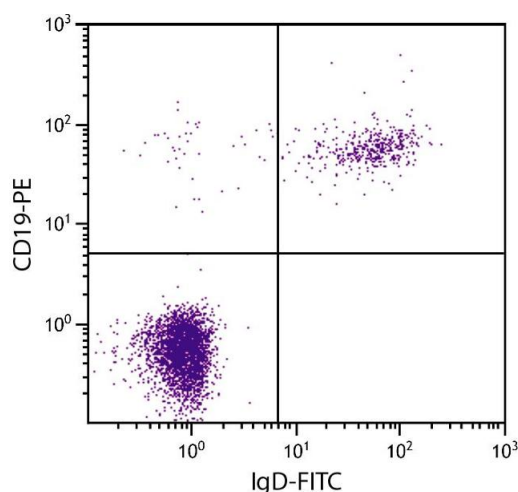
Storage:

4 °C

Storage Comment:

Store at 2-8°C

Images



Flow Cytometry

Image 1. Human peripheral blood lymphocytes were stained with Goat F(ab')₂ Anti-Human IgD-FITC and Mouse Anti-Human CD19-PE.