

Datasheet for ABIN376138

## Goat anti-Human Immunoglobulin kappa Chain Complex (Igk) (Chain kappa) Antibody (FITC)



[Go to Product page](#)

### 1 Image

#### Overview

Quantity:	0.5 mg
Target:	Igk
Binding Specificity:	Chain kappa
Reactivity:	Human
Host:	Goat
Clonality:	Polyclonal
Conjugate:	FITC
Application:	Flow Cytometry (FACS), ELISA

#### Product Details

Isotype:	IgG
Fragment:	F(ab') <sub>2</sub> fragment
Specificity:	Reacts with human $\lambda$ light chains as demonstrated by ELISA and flow cytometry.
Characteristics:	Goat F(ab') <sub>2</sub> Anti-Human Kappa-FITC
Purification:	Gel filtration chromatography of pepsin digested antibody.

#### Target Details

Target:	Igk
Alternative Name:	Kappa ( <a href="#">Igk Products</a> )

## Application Details

### Application Notes:

- **Applications:** Quality tested applications include - ELISA , FLISA FC ,
- Other referenced applications include - ICC , WB , SPR , Stim
- **Working Dilutions:** ELISA HRP conjugate 1:4,000 - 1:8,000 BIOT conjugate 1:5,000 - 1:20,000 FLISA FITC and AF488 conjugates 1:200 - 1:400 AF555 conjugate 1:100 - 1:400 PE and AF647 conjugates 1 g/mL Flow Cytometry FITC, BIOT, and AF488 conjugates 1 g/10<sup>6</sup> cells AF647 conjugate 0.1 g/10<sup>6</sup> cells PE conjugate 0.05 g/10<sup>6</sup> cells For flow cytometry, the suggested use of these reagents is in a final volume of 100 L

Comment: B cell enumeration

Sample Volume: 1 mL

Restrictions: For Research Use only

## Handling

Concentration: 0.5 mg/mL

Buffer: 0.5 mg in 1.0 mL of PBS/Sodium azide

Preservative: Sodium azide

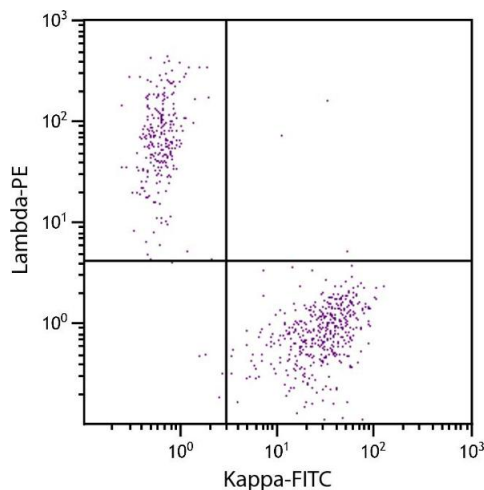
Precaution of Use: This product contains Sodium azide: a POISONOUS AND HAZARDOUS SUBSTANCE which should be handled by trained staff only.

Handling Advice: **Protect conjugated products from light.**  
Each reagent is stable for the period shown on the bottle label if stored as directed.

Storage: 4 °C

Storage Comment: Store at 2-8°C

## Images



### Flow Cytometry

**Image 1.** CD19+ human B-lymphocytes were stained with Goat F(ab')<sub>2</sub> Anti-Human Kappa-FITC and Goat F(ab')<sub>2</sub> Anti-Human Lambda, Mouse ads-PE.