

Datasheet for ABIN376149

**Mouse anti-Rat IgG2a Antibody (FITC)**[Go to Product page](#)**1** Image

## Overview

Quantity:	0.5 mg
Target:	IgG2a
Reactivity:	Rat
Host:	Mouse
Clonality:	Monoclonal
Conjugate:	FITC
Application:	ELISA, Flow Cytometry (FACS)

## Product Details

Immunogen:	Rat IgG2a hybridoma
Clone:	2A8F4
Isotype:	IgG1
Specificity:	Rat IgG2a
Characteristics:	Mouse Anti-Rat IgG2a-FITC
Purification:	Purified

## Target Details

Target:	IgG2a
Abstract:	<a href="#">IgG2a Products</a>
Target Type:	Antibody

## Application Details

Application Notes:	<ul style="list-style-type: none"><li>• <b>Applications:</b> FC - Quality tested , ELISA - Quality tested , FLISA - Quality tested IHC-FS - Reported in literature , ELISPOT - Reported in literature</li><li>• <b>Working Dilutions:</b> Flow Cytometry FITC, BIOT, and AF488 conjugates 1 g/106 cells PE, CY5, and AF647 conjugates 0.1 g/106 cells For flow cytometry, the suggested use of these reagents is in a final volume of 100 L ELISA AP conjugate 1:2,000 - 1:4,000 HRP conjugate 1:4,000 - 1:8,000 BIOT conjugate 1:5,000 - 1:10,000 FLISA FITC and AF488 conjugates 1:200 - 1:400 AF555 conjugate 1:100 - 1:400 PE, CY5, and AF647 conjugates 1 g/mL</li></ul>
--------------------	---

Comment: Excitation/Emission wavelength: 494 nm/514 nm

Restrictions: For Research Use only

## Handling

Concentration: 0.5 mg/mL

Buffer: 0.5 mg in 1.0 mL of PBS/Sodium azide

Preservative: Sodium azide

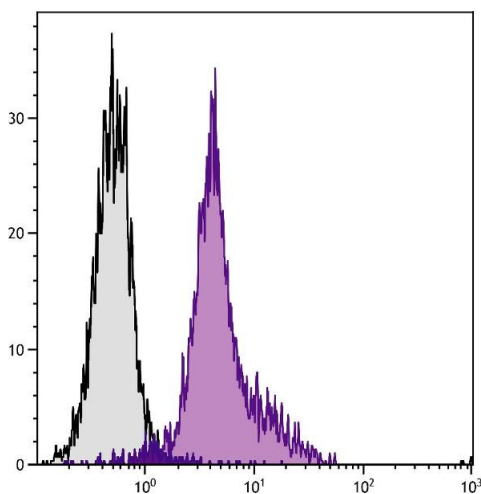
Precaution of Use: This product contains Sodium azide: a POISONOUS AND HAZARDOUS SUBSTANCE which should be handled by trained staff only.

Handling Advice: **Protect conjugated products from light.**  
Each reagent is stable for the period shown on the bottle label if stored as directed.

Storage: 4 °C

Storage Comment: Store at 2-8°C

## Images



### Flow Cytometry

**Image 1.** BALB/c mouse splenocytes were stained with Rat Anti-Mouse CD11a-UNLB.