

Datasheet for ABIN376195

Donkey anti-Mouse IgG (Heavy & Light Chain) Antibody (FITC)[Go to Product page](#)**1** Image

Overview

Quantity:	1 mg
Target:	IgG
Binding Specificity:	Heavy & Light Chain
Reactivity:	Mouse
Host:	Donkey
Clonality:	Polyclonal
Conjugate:	FITC
Application:	ELISA, Immunohistochemistry (IHC), Flow Cytometry (FACS)

Product Details

Isotype:	IgG
Specificity:	Reacts with the heavy and light chains of mouse IgG as demonstrated by ELISA.
Characteristics:	Source: Pooled antisera from donkeys hyperimmunized with mouse IgG. To insure lot-to-lot consistency, each batch of product is tested by ELISA and/or PCFIA for conformance to characteristics of a standard reference reagent.
Purification:	Affinity chromatography on pooled mouse IgG covalently linked to agarose.

Target Details

Target:	IgG
Abstract:	IgG Products

Target Details

Target Type: Antibody

Application Details

Application Notes: Working Dilution:
<= 1 µg/10⁶ cells
Representative data are included in this product insert.

Each laboratory should determine an optimum working titer for use in its particular application. Other applications have not been tested but use in such assays should not necessarily be excluded.

Comment: Excitation/Emission wavelength: 494 nm/514 nm

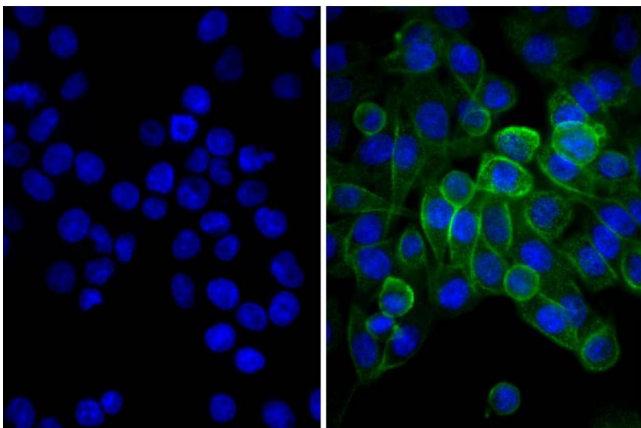
Restrictions: For Research Use only

Handling

Handling Advice: **Protect conjugated products from light.**
Each reagent is stable for the period shown on the bottle label if stored as directed.

Storage: 4 °C

Images



Immunofluorescence

Image 1. Human pancreatic carcinoma cell line MIA PaCa-2 was stained with Mouse Anti-Human CD44-UNLB and DAPI.