



[Go to Product page](#)

Datasheet for ABIN376196

## Donkey anti-Goat IgG (Heavy & Light Chain) Antibody (FITC)

### 1 Image

#### Overview

Quantity:	1 mg
Target:	IgG
Binding Specificity:	Heavy & Light Chain
Reactivity:	Goat
Host:	Donkey
Clonality:	Polyclonal
Conjugate:	FITC
Application:	ELISA, Immunohistochemistry (IHC), Flow Cytometry (FACS)

#### Product Details

Isotype:	IgG
Specificity:	Reacts with the heavy and light chains of Goat IgG as demonstrated by ELISA.
Characteristics:	Source: Pooled antisera from donkey hyperimmunized with goat IgG. To insure lot-to-lot consistency, each batch of product is tested by ELISA and/or PCFIA for conformance to characteristics of a standard reference reagent.
Purification:	Affinity chromatography on pooled mouse IgG covalently linked to agarose.

#### Target Details

Target:	IgG
Abstract:	<a href="#">IgG Products</a>

## Target Details

---

Target Type: Antibody

## Application Details

---

Application Notes: Working Dilution:  
<= 1 µg/10<sup>6</sup> cells  
Representative data are included in this product insert.

Each laboratory should determine an optimum working titer for use in its particular application. Other applications have not been tested but use in such assays should not necessarily be excluded.

Comment: Excitation/Emission wavelength: 494 nm/514 nm

Restrictions: For Research Use only

## Handling

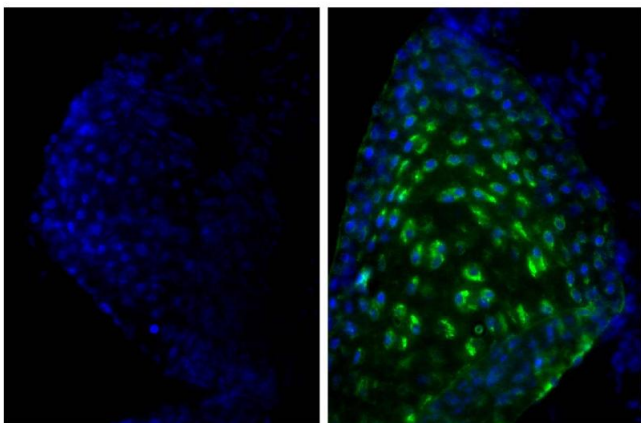
---

Handling Advice: **Protect conjugated products from light.**  
Each reagent is stable for the period shown on the bottle label if stored as directed.

Storage: 4 °C

## Images

---



### Immunofluorescence

**Image 1.** Frozen newborn mouse cartilage section was stained with Goat Anti-Type II Collagen-UNLB and DAPI.