

Datasheet for ABIN376205

**Mouse anti-Human IgD Antibody (FITC)**[Go to Product page](#)**1** Image

## Overview

Quantity:	0.5 mg
Target:	IgD
Reactivity:	Human
Host:	Mouse
Clonality:	Monoclonal
Conjugate:	FITC
Application:	Flow Cytometry (FACS), ELISA

## Product Details

Immunogen:	Human IgD myeloma protein
Clone:	IADB6
Isotype:	IgG2a
Specificity:	Reacts with the heavy chain of human IgD as demonstrated by ELISA,
Characteristics:	Mouse Anti-Human IgD-FITC
Purification:	Purified

## Target Details

Target:	IgD
Abstract:	<a href="#">IgD Products</a>
Target Type:	Antibody

# Application Details

Application Notes:	<ul style="list-style-type: none"><li>• <b>Applications:</b> ELISA - Quality tested FLISA - Quality tested FC - Quality tested , IHC-FS - Reported in literature , IHC-PS - Reported in literature , IP - Reported in literature , Sep - Reported in literature , Costim - Reported in literature</li><li>• <b>Working Dilutions:</b> ELISA Purified (UNLB) antibody 1 g/mL AP conjugate 1:2,000 - 1:4,000 HRP conjugate 1:4,000 - 1:8,000 BIOT conjugate 1:5,000 - 20,000 FLISA FITC and AF488 conjugates 1:200 - 1:400 PE and AF647 conjugates 1 g/mL Flow Cytometry FITC, BIOT, and AF488 conjugates 1 g/10<sup>6</sup> cells PE and AF647 conjugates 0.1 g/10<sup>6</sup> cells For flow cytometry, the suggested use of these reagents is in a final volume of 100 L</li></ul>
--------------------	---

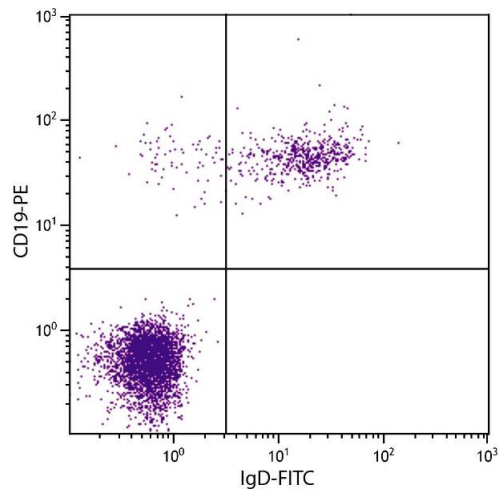
Comment: Excitation/Emission wavelength: 494 nm/514 nm

Restrictions: For Research Use only

## Handling

Concentration:	0.5 mg/mL
Buffer:	0.5 mg in 1.0 mL of PBS/Sodium azide
Preservative:	Sodium azide
Precaution of Use:	This product contains Sodium azide: a POISONOUS AND HAZARDOUS SUBSTANCE which should be handled by trained staff only.
Handling Advice:	<b>Protect conjugated products from light.</b> Each reagent is stable for the period shown on the bottle label if stored as directed.
Storage:	4 °C
Storage Comment:	Store at 2-8°C

## Images



### Flow Cytometry

**Image 1.** Human peripheral blood lymphocytes were stained with Mouse Anti-Human IgD-FITC.