

Datasheet for ABIN376233

Human IgG1 isotype control (HRP)[Go to Product page](#)**1** Image

Overview

Quantity:	1 mL
Target:	IgG1
Host:	Human
Clonality:	Polyclonal
Conjugate:	HRP
Application:	Isotype Control (IsoC), ELISA, Western Blotting (WB), Immunohistochemistry (IHC)

Product Details

Isotype:	IgG1
Characteristics:	Source: Myeloma serum To insure lot-to-lot consistency, each batch of product is tested by ELISA and immunoelectrophoresis to conform with characteristics of a standard reference reagent.
Purification:	Affinity chromatography on protein G covalently linked to agarose
Purity:	> 95 % by SDS-PAGE

Target Details

Target:	IgG1
Abstract:	IgG1 Products
Target Type:	Antibody

Application Details

Application Notes: Each laboratory should determine an optimum working titer for use in its particular application. Other applications have not been tested but use in such assays should not necessarily be excluded.

Sample Volume: 1 mL

Restrictions: For Research Use only

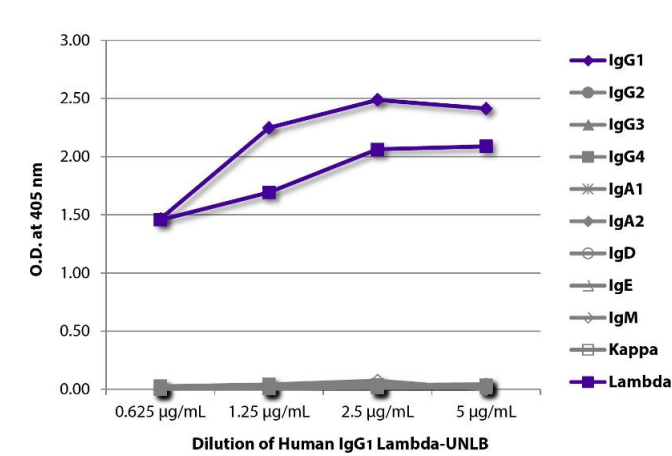
Handling

Format: Liquid

Handling Advice: Avoid repeated freezing and thawing. Dilute only prior to immediate use
Centrifuge product if not completely clear after standing at room temperature.
Do NOT add Sodium Azide! Use of Sodium Azide will inhibit enzyme activity of horseradish peroxidase.

Storage: 4 °C

Images



ELISA

Image 1. ELISA plate was coated with serially diluted Human IgG1 Lambda-UNLB and quantified.