



Datasheet for ABIN376248

Goat anti-Mouse IgG1 (Heavy Chain) Antibody (HRP)



[Go to Product page](#)

1 Image

2 Publications

Overview

Quantity:	1 mL
Target:	IgG1
Binding Specificity:	Heavy Chain
Reactivity:	Mouse
Host:	Goat
Clonality:	Polyclonal
Conjugate:	HRP
Application:	ELISA, Western Blotting (WB), Immunohistochemistry (IHC)

Product Details

Isotype:	IgG
Specificity:	Reacts with the heavy chain of mouse IgG1 as demonstrated by ELISA and flow cytometry.
Characteristics:	Source: Pooled antisera from goats hyperimmunized with mouse IgG 1 paraproteins. To insure lot-to-lot consistency, each batch of product is tested by ELISA, Fluorescent ELISA, and/or flow cytometry to conform to characteristics of a standard reference reagent.
Purification:	Affinity chromatography on mouse IgG1 covalently linked to agarose. Cross Absorption: Mouse IgM, IgG2a, IgG2b, IgG3 and IgA, pooled human sera and purified human paraproteins.

Target Details

Target: IgG1

Abstract: [IgG1 Products](#)

Target Details

Target Type: Antibody

Application Details

Application Notes: Working Dilution:
ELISA: 1:4,000-1:8,000
Indirect immunostaining in conjunction with mouse IgG1 monoclonal antibodies.
Representative data are included in this product insert.

Each laboratory should determine an optimum working titer for use in its particular application.
Other applications have not been tested but use in such assays should not necessarily be excluded.

Restrictions: For Research Use only

Handling

Format: Liquid

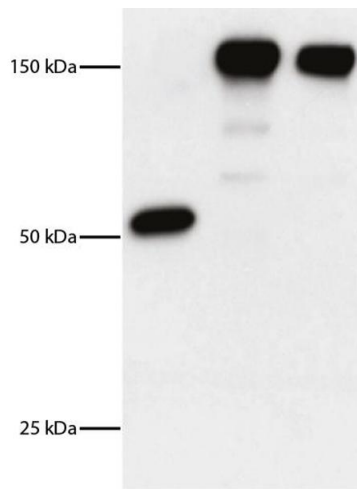
Handling Advice: Avoid repeated freezing and thawing. Dilute only prior to immediate use
Centrifuge product if not completely clear after standing at room temperature.
Do NOT add Sodium Azide! Use of Sodium Azide will inhibit enzyme activity of horseradish peroxidase.

Storage: 4 °C/-20 °C

Storage Comment: Store at 2-8 °C or long-term at -20 °C.

Publications

Product cited in: Brummelman, Helm, Hamstra, van der Ley, Boog, Han, van Els: "Modulation of the CD4(+) T cell response after acellular pertussis vaccination in the presence of TLR4 ligation." in: **Vaccine**, (2015) ([PubMed](#)).



Western Blotting

Image 1. Lane 1 - DEC Monoclonal Antibody

Lane 2 - DEC-HER2 Monoclonal Antibody

Lane 3 - Control Ig-HER2 Monoclonal Antibody

HER2 extracellular domain was cloned in frame into the COOH terminus of anti-DEC (DEC-HER2). DEC, DEC-HER2, and control mouse IgG were resolved by electrophoresis, transferred to membrane, and probed with Goat Anti-Mouse IgG1, Human ads-HRP