

Datasheet for ABIN376252

**Goat anti-Mouse IgG3 (Heavy Chain) Antibody (HRP)**[Go to Product page](#)**1** Image

## Overview

Quantity:	1 mL
Target:	IgG3
Binding Specificity:	Heavy Chain
Reactivity:	Mouse
Host:	Goat
Clonality:	Polyclonal
Conjugate:	HRP
Application:	ELISA, Western Blotting (WB), Immunohistochemistry (IHC)

## Product Details

Isotype:	IgG
Specificity:	Reacts with the heavy chain of mouse IgG 3 as demonstrated by ELISA and flow cytometry.
Characteristics:	Source: Pooled antisera from goats hyperimmunized with mouse IgG 3 paraproteins. To insure lot-to-lot consistency, each batch of product is tested by ELISA, PCFIA and/or flow cytometry for conformance to characteristics of a standard reference reagent.
Purification:	Affinity chromatography on mouse IgG 3 covalently linked to agarose.

## Target Details

Target:	IgG3
Abstract:	<a href="#">IgG3 Products</a>

## Target Details

Target Type: Antibody

## Application Details

Application Notes: Working Dilution:  
1:4,000-1:8,000  
Representative data are included in this product insert.

Each laboratory should determine an optimum working titer for use in its particular application. Other applications have not been tested but use in such assays should not necessarily be excluded.

Restrictions: For Research Use only

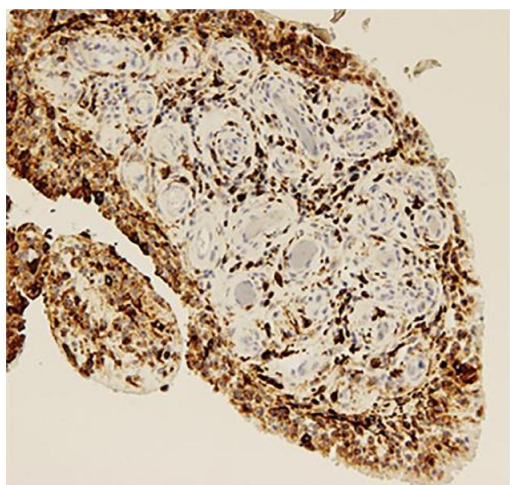
## Handling

Format: Liquid

Handling Advice: Avoid repeated freezing and thawing. Dilute only prior to immediate use  
Centrifuge product if not completely clear after standing at room temperature.  
Do NOT add Sodium Azide! Use of Sodium Azide will inhibit enzyme activity of horseradish peroxidase.

Storage: 4 °C

## Images



### Immunohistochemistry

**Image 1.** Paraffin embedded human synovial tissue was stained with anti-CD68 followed by Goat Anti-Mouse IgG3, Human ads-HRP