

Datasheet for ABIN376278

Goat anti-Rat IgM (Heavy Chain) Antibody (HRP)[Go to Product page](#)**1** Image

Overview

Quantity:	1 mL
Target:	IgM
Binding Specificity:	Heavy Chain
Reactivity:	Rat
Host:	Goat
Clonality:	Polyclonal
Conjugate:	HRP
Application:	ELISA, Immunohistochemistry (IHC), Western Blotting (WB)

Product Details

Isotype:	IgG
Specificity:	Reacts with the heavy chain of rat IgM as demonstrated by ELISA.
Characteristics:	Source: Pooled antisera from goats hyperimmunized with normal rat IgM To insure lot-to-lot consistency, each batch of product is tested by ELISA, PCFIA and/or flow cytometry for conformance to characteristics of a standard reference reagent.
Purification:	Affinity chromatography on mouse IgM covalently linked to agarose.

Target Details

Target:	IgM
Abstract:	IgM Products

Target Details

Target Type: Antibody

Application Details

Application Notes: Working Dilution:
1:4,000-1:8,000
Representative data are included in this product insert.

Each laboratory should determine an optimum working titer for use in its particular application. Other applications have not been tested but use in such assays should not necessarily be excluded.

Restrictions: For Research Use only

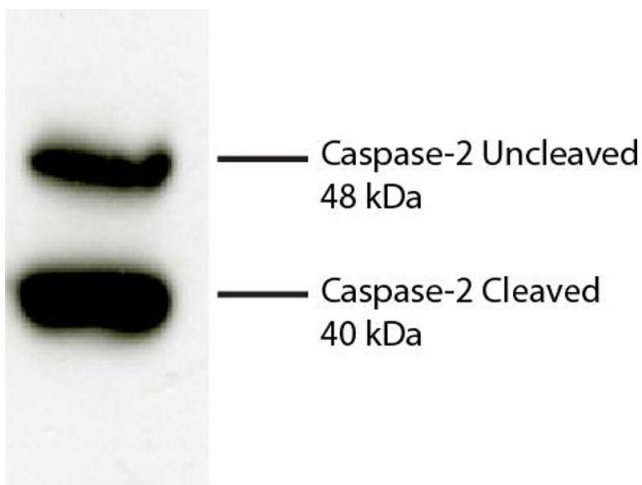
Handling

Format: Liquid

Handling Advice: Avoid repeated freezing and thawing. Dilute only prior to immediate use
Centrifuge product if not completely clear after standing at room temperature.
Do NOT add Sodium Azide! Use of Sodium Azide will inhibit enzyme activity of horseradish peroxidase.

Storage: 4 °C

Images



Western Blotting

Image 1. Total cell lysates from Jurkat cells were incubated with Rabbit Anti-Human DR5-UNLB secondary antibody and chemiluminescent detection.