

Datasheet for ABIN376280

Mouse anti-Rat IgG1 (Fc Region) Antibody (HRP)



[Go to Product page](#)

1 Image

Overview

Quantity:	1 mL
Target:	IgG1
Binding Specificity:	Fc Region
Reactivity:	Rat
Host:	Mouse
Clonality:	Monoclonal
Conjugate:	HRP
Application:	ELISA, Immunohistochemistry (IHC)

Product Details

Clone:	G1 1C5
Isotype:	IgG1
Specificity:	Reacts with the gamma 1 heavy chain (Fc) of Rat IgG1,
Characteristics:	To insure lot-to-lot consistency, each batch of monoclonal antibody is tested as a 2nd step reagent by flow cytometry to conform to characteristics of a standard reference reagent.
Purification:	Purified

Target Details

Target:	IgG1
Abstract:	IgG1 Products

Target Details

Target Type: Antibody

Application Details

Application Notes: Working Dilution:
1:4,000-1:8,000
Representative data are included in this product insert.

Each laboratory should determine an optimum working titer for use in its particular application.
Other applications have not been tested but use in such assays should not necessarily be excluded.

Restrictions: For Research Use only

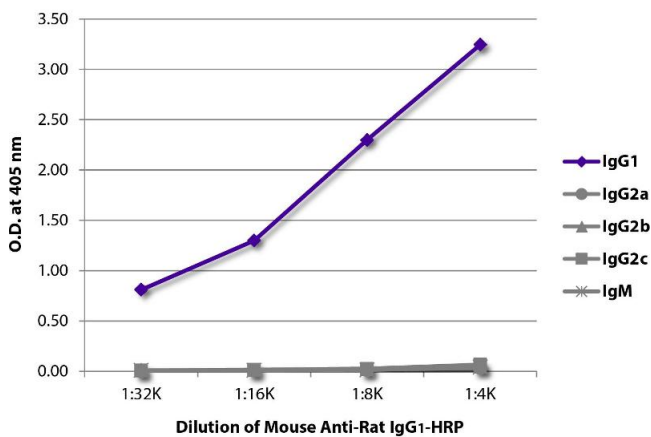
Handling

Format: Liquid

Handling Advice: Avoid repeated freezing and thawing. Dilute only prior to immediate use
Centrifuge product if not completely clear after standing at room temperature.
Do NOT add Sodium Azide! Use of Sodium Azide will inhibit enzyme activity of horseradish peroxidase.

Storage: 4 °C

Images



ELISA

Image 1. ELISA plate was coated with purified rat IgG1, IgG2a, IgG2b, IgG2c, and IgM. Immunoglobulins were detected with serially diluted Mouse Anti-Rat IgG1-HRP.