

Datasheet for ABIN376292

anti-Myosin Heavy Chain antibody (HRP)[Go to Product page](#)**1** Image

Overview

Quantity:	1 mL
Target:	Myosin Heavy Chain
Reactivity:	Rabbit
Host:	Mouse
Clonality:	Monoclonal
Conjugate:	This Myosin Heavy Chain antibody is conjugated to HRP
Application:	ELISA, Western Blotting (WB)

Product Details

Immunogen:	Rabbit Light Chain
Clone:	SB62a
Isotype:	IgG2b
Characteristics:	<p>The antibody detects: Rabbit Light Chain</p> <p>Mouse Anti-Rabbit Light Chain antibody (clone: SB62a) reacts with the light chain of native Rabbit IgG primary antibodies and does not bind to the reduced and denatured Rabbit IgG heavy chain band (50 kDa). By using our Mouse Anti-Rabbit Light Chain antibody, detection of antigens with molecular weights near 50 kDa is not obscured by large amounts of reduced and denatured Rabbit IgG heavy chains on the blots. To insure acceptable performance, each batch of product is tested by ELISA to conform to characteristics of a standard reference reagent.</p>
Purification:	Purified

Target Details

Target:	Myosin Heavy Chain
Alternative Name:	Chain (Myosin Heavy Chain Products)

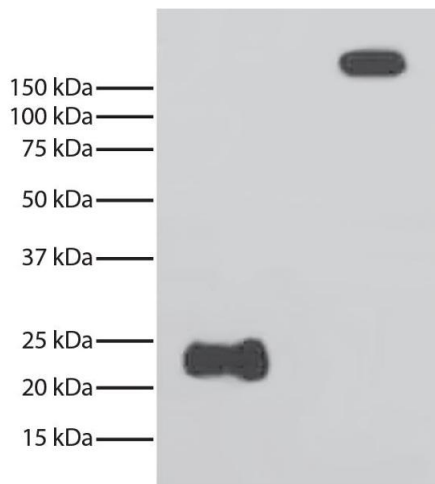
Application Details

Application Notes:	Each laboratory should determine an optimum working titer for use in its particular application. Other applications have not been tested but use in such assays should not necessarily be excluded.
Sample Volume:	1 mL
Restrictions:	For Research Use only

Handling

Format:	Liquid
Handling Advice:	Protect conjugated products from light. Each reagent is stable for the period shown on the bottle label if stored as directed.
Storage:	4 °C

Images



Western Blotting

Image 1. Reduced and non-reduced rabbit IgG was resolved by electrophoresis, transferred to PVDF membrane, and probed with Mouse Anti-Rabbit Light Chain-HRP. Light chains were visualized using chemiluminescent detection.