

Datasheet for ABIN376293

**Rat anti-Rabbit Ig Antibody (HRP)**[Go to Product page](#)**1** Image

## Overview

Quantity:	1 mL
Target:	Ig
Reactivity:	Rabbit
Host:	Rat
Clonality:	Monoclonal
Conjugate:	HRP
Application:	ELISA

## Product Details

Clone:	SB87a
Isotype:	IgG2a
Specificity:	Reacts with Rabbit IgG and Rabbit IgM as demonstrated by ELISA,
Characteristics:	To insure lot-to-lot consistency, each batch of product is tested by ELISA and/or flow cytometry to conform to characteristics of a standard reference reagent.
Purification:	Purified

## Target Details

Target:	Ig
Abstract:	<a href="#">Ig Products</a>

## Application Details

**Application Notes:** Each laboratory should determine an optimum working titer for use in its particular application. Other applications have not been tested but use in such assays should not necessarily be excluded.

**Restrictions:** For Research Use only

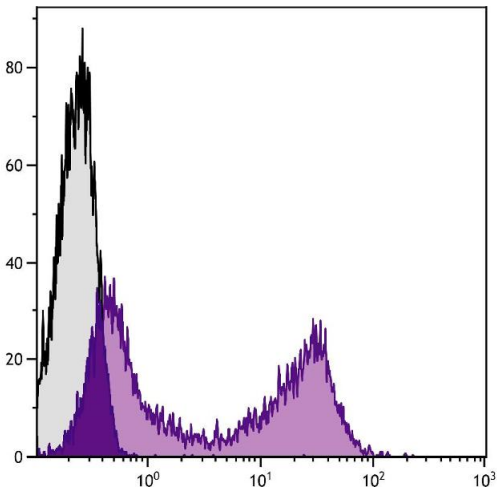
## Handling

**Format:** Liquid

**Handling Advice:** Avoid repeated freezing and thawing. Dilute only prior to immediate use  
Centrifuge product if not completely clear after standing at room temperature.  
Do NOT add Sodium Azide! Use of Sodium Azide will inhibit enzyme activity of horseradish peroxidase.

**Storage:** 4 °C

## Images



### Flow Cytometry

**Image 1.** Rabbit peripheral blood lymphocytes were stained with Rat Anti-Rabbit Ig-BIOT.