

Datasheet for ABIN376330  
**anti-FITC antibody (HRP)**[Go to Product page](#)

## 1 Image

## Overview

Quantity:	1 mL
Target:	FITC
Reactivity:	Please inquire
Host:	Sheep
Clonality:	Polyclonal
Conjugate:	This FITC antibody is conjugated to HRP
Application:	ELISA, Western Blotting (WB), Immunohistochemistry (IHC)

## Product Details

Isotype:	IgG
Cross-Reactivity (Details):	Cross Absorption: Mouse, human and rat serum proteins.
Characteristics:	Source: Pooled antisera from sheep hyperimmunized with Fluorescein Isothiocyanate (Isomer I) To insure lot-to-lot consistency, each batch of product is tested by ELISA and/or PCFIA for conformance to characteristics of a standard reference reagent.
Purification:	Affinity chromatography

## Target Details

Target:	FITC
Alternative Name:	FITC ( <a href="#">FITC Products</a> )
Target Type:	Chemical

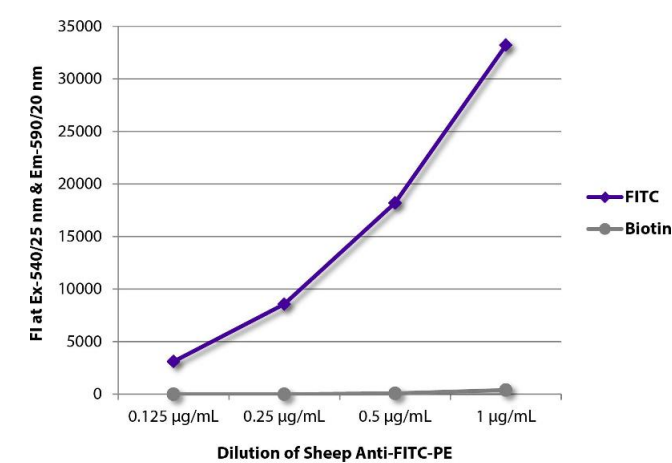
## Application Details

Application Notes:	Working Dilution: 1:4,000-1:8,000  Representative data are included in this product insert.  Each laboratory should determine an optimum working titer for use in its particular application. Other applications have not been tested but use in such assays should not necessarily be excluded.
Sample Volume:	1 mL
Restrictions:	For Research Use only

## Handling

Format:	Liquid
Handling Advice:	<b>Protect conjugated products from light.</b>  Each reagent is stable for the period shown on the bottle label if stored as directed.
Storage:	4 °C

## Images



### ELISA

**Image 1.** FLISA plate was coated with Goat Anti-Human IgG-FITC.