



[Go to Product page](#)

Datasheet for ABIN376338

## Protein G-HRP

### 1 Image

#### Overview

Quantity:	1 mL
Target:	Protein G
Reactivity:	Streptococcus pyogenes
Host:	Streptococcus sp.
Clonality:	Polyclonal
Conjugate:	HRP
Application:	Immunoprecipitation (IP), ELISA

#### Product Details

Characteristics:	<p>Source: Recombinant, from Streptococcus Strain G148, produced in E. coli.</p> <p>Mr/Structure 22 kDa. Protein G is a monomeric protein lacking cystine residues, on SDS gel, it migrates to 32 kDa.</p> <p>To insure lot-to-lot consistency, each batch of product is tested by FPLC and ELISA to conform to the characteristics of a standard reference reagent.</p>
Purification:	Purified

#### Target Details

Target:	Protein G
Abstract:	<a href="#">Protein G Products</a>
Background:	Protein G binds the Fc portion of IgGs from many species including all human, and mouse (IgG 1, weakly) subclasses. It does not bind IgM, IgA, IgE or serum albumin.

## Application Details

**Application Notes:** Each laboratory should determine an optimum working titer for use in its particular application. Other applications have not been tested but use in such assays should not necessarily be excluded.

**Comment:** Gamma immunoglobulin capture, Conjugation on solid phase or others to detect gamma immunoglobulin

**Restrictions:** For Research Use only

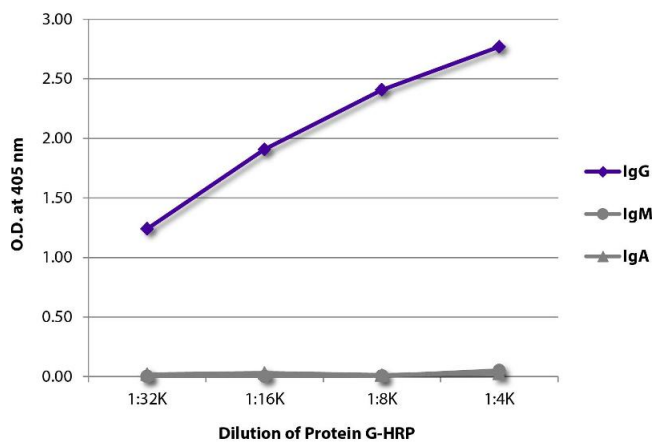
## Handling

**Format:** Liquid

**Handling Advice:** **Protect conjugated products from light.**  
Each reagent is stable for the period shown on the bottle label if stored as directed.

**Storage:** 4 °C

## Images



### ELISA

**Image 1.** ELISA plate was coated with purified human IgG, IgM, and IgA. Immunoglobulins were detected with serially diluted Protein G-HRP.