

Datasheet for ABIN376357

Mouse IgG1 Isotype Control**1** Image**4** Publications[Go to Product page](#)

Overview

Quantity:	0.5 mg
Target:	IgG1
Host:	Mouse
Clonality:	Monoclonal
Application:	Flow Cytometry (FACS), ELISA

Product Details

Clone:	15H6
Isotype:	IgG1
Specificity:	T-2 mycotoxin
Characteristics:	Mouse IgG1-LE/AF
Purification:	Purified
Endotoxin Level:	Low endotoxin

Target Details

Target:	IgG1
Abstract:	IgG1 Products
Target Type:	Antibody

Application Details

Application Notes:

- **Applications:** FC - Quality tested , ELISA - Quality tested , FLISA - Quality tested IHC-FS - Reported in literature , IHC-PS - Reported in literature , ICC - Reported in literature , WB - Reported in literature , Block - Reported in literature , In vitro control - Reported in literature , In vivo control - Reported in literature , Multiplex - Reported in literature
- **Working Dilutions:** Flow Cytometry Purified (UNLB) antibody 1 g/106 cells BIOT conjugate 1 g/106 cells FITC, PE, PE/TXRD, APC, SPRD, CY5, PE/CY5.5, PE/CY7, 10 L/106 cells APC/CY5.5, APC/CY7, PACBLU, AF488, AF647, and AF700 conjugates For flow cytometry, the suggested use of these reagents is in a final volume of 100 L ELISA Purified (UNLB) antibody 1 - 5 g/mL AP and HRP conjugates 1:2,000 - 1:4,000

Sample Volume: 1 mL

Restrictions: For Research Use only

Handling

Concentration: 0.5 mg/mL

Buffer: 0.5 mg purified immunoglobulin in 1.0 mL of PBS

Preservative: Azide free

Handling Advice: Each reagent is stable for the period shown on the bottle label if stored as directed.

Storage: -20 °C

Storage Comment: Aliquot and freeze the low endotoxin, azide-free product at -20 °C immediately upon receipt.

Publications

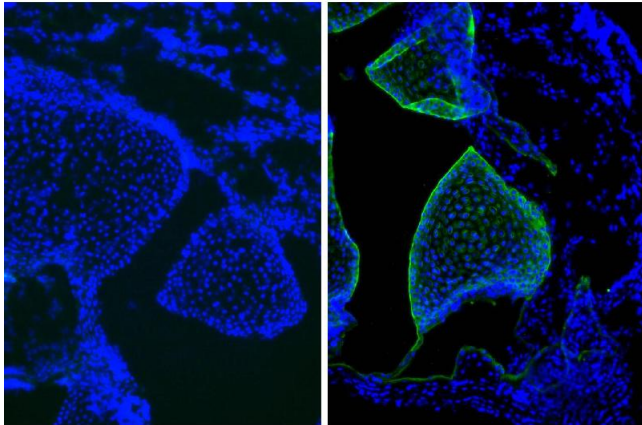
Product cited in: Tavares Pereira, Gram, Nowaczyk, Boos, Hoffmann, Janowski, Kowalewski: "Prostaglandin-mediated effects in early canine corpus luteum: In vivo effects on vascular and immune factors." in: **Reproductive biology**, Vol. 19, Issue 1, pp. 100-111, (2019) ([PubMed](#)).

Klaile, Müller, Schäfer, Clauder, Feer, Heyl, Stock, Klassert, Zipfel, Singer, Slevogt: "Binding of *Candida albicans* to Human CEACAM1 and CEACAM6 Modulates the Inflammatory Response of Intestinal Epithelial Cells." in: **mBio**, Vol. 8, Issue 2, (2017) ([PubMed](#)).

Cinci, Mamidi, Li, Fehring, Kirschfink: "Targeted delivery of siRNA using transferrin-coupled lipoplexes specifically sensitizes CD71 high expressing malignant cells to antibody-mediated complement attack." in: **Targeted oncology**, (2014) ([PubMed](#)).

Sleeman, Kendrick, Ashworth, Isacke, Smalley: "CD24 staining of mouse mammary gland cells

defines luminal epithelial, myoepithelial/basal and non-epithelial cells." in: **Breast cancer research : BCR**, Vol. 8, Issue 1, pp. R7, (2006) ([PubMed](#)).



Immunofluorescence

Image 1. Frozen newborn mouse cartilage section was stained with Mouse IgG1-UNLB isotype control and DAPI.