

Datasheet for ABIN376359
Mouse IgG2b Isotype Control

1 Image

1 Publication



[Go to Product page](#)

Overview

Quantity:	0.5 mg
Target:	IgG2b
Host:	Mouse
Clonality:	Monoclonal
Application:	Flow Cytometry (FACS), ELISA

Product Details

Clone:	A-1
Isotype:	IgG2b
Specificity:	Chicken IgA
Characteristics:	Mouse IgG2b-LE/AF
Purification:	Purified
Endotoxin Level:	Low endotoxin

Target Details

Target:	IgG2b
Abstract:	IgG2b Products
Target Type:	Antibody

Application Details

Application Notes:

- **Applications:** FC - Quality tested , ELISA - Quality tested , FLISA - Quality tested IHC-FS - Reported in literature , IHC-PS , In vitro control - Reported in literature
- **Working Dilutions:** Flow Cytometry Purified (UNLB) antibody 1 g/106 cells BIOT conjugate 1 g/106 cells FITC, PE, APC, CY3, SPRD, CY5, PE/CY5.5, PE/CY7, 10 L/106 cells APC/CY5.5, APC/CY7, and AF700 conjugates For flow cytometry, the suggested use of these reagents is in a final volume of 100 L ELISA Purified (UNLB) antibody 1 - 5 g/mL AP and HRP conjugates 1:2,000 - 1:4,000

Sample Volume: 1 mL

Restrictions: For Research Use only

Handling

Concentration: 0.5 mg/mL

Buffer: 0.5 mg purified immunoglobulin in 1.0 mL of PBS

Preservative: Azide free

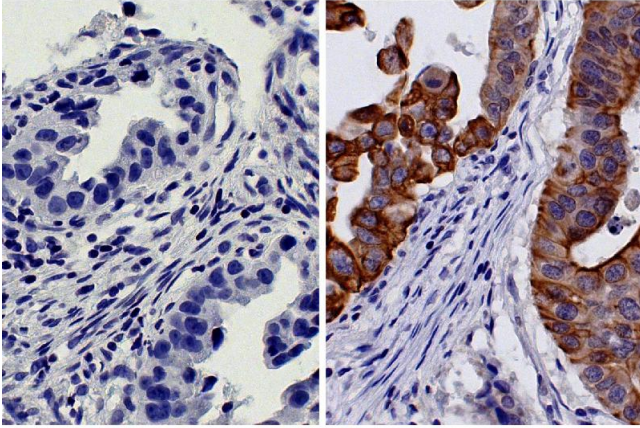
Handling Advice: Each reagent is stable for the period shown on the bottle label if stored as directed.

Storage: -20 °C

Storage Comment: Aliquot and freeze the low endotoxin, azide-free product at -20 °C immediately upon receipt.

Publications

Product cited in: Cinci, Mamidi, Li, Fehring, Kirschfink: "Targeted delivery of siRNA using transferrin-coupled lipoplexes specifically sensitizes CD71 high expressing malignant cells to antibody-mediated complement attack." in: **Targeted oncology**, (2014) ([PubMed](#)).



Immunohistochemistry

Image 1. Paraffin embedded human gastric cancer tissue was stained with Mouse IgG2b-HRP isotype control followed by DAB and hematoxylin.